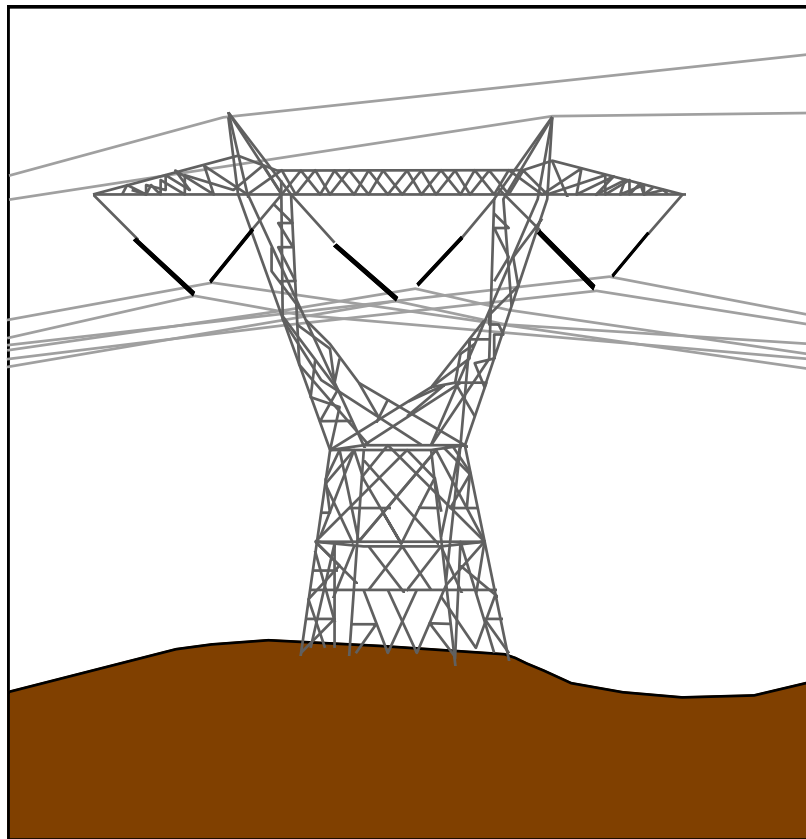


Message handbook for Ediel Implementation guide for Quote message



| | |
|------------------|---------------------------------|
| EDIFACT-message: | QUOTES |
| EDIFACT-version: | D |
| EDIFACT-release: | 96A |
| IG-status: | For implementation |
| IG-version: | 3.3 |
| IG-revision: | B |
| IG-date: | December 6 th , 2018 |

CONTENTS

| | |
|---|-----------|
| 1. INTRODUCTION | 3 |
| 2. GENERAL DESCRIPTION OF THE «QUOTE MESSAGE» | 4 |
| 2.1. FUNCTIONAL DEFINITION | 4 |
| 2.2. PRINCIPLES | 4 |
| 3. REFERENCES | 5 |
| 3.1. PRECEDENCE..... | 5 |
| 4. QUALITY ASSURANCE | 6 |
| 4.1. VERSION NUMBER..... | 6 |
| 4.2. CORRECTIONS FROM EARLIER VERSIONS..... | 6 |
| 5. SPECIAL CONDITIONS | 9 |
| 5.1. CORRECTIONS OR CANCELLATION OF A QUOTATION | 9 |
| 5.2. USE OF TIME PERIOD | 9 |
| 6. OVERVIEW OF THE MESSAGE | 10 |
| 6.1. DATA MODEL FOR THE QUOTE MESSAGE | 10 |
| 6.2. DATA MODEL FOR TRADE..... | 10 |
| 6.3. DATA MODEL FOR PROFILE BLOCK BIDS | 10 |
| 6.4. DATA MODEL FOR THE REGULATION MARKET | 12 |
| 6.5. CUE LIST | 13 |
| 6.5.1. <i>Elspot (S)</i> | 13 |
| 6.5.2. <i>Regulation Market (R) and Peak Load Capacity Market (L)</i> | 13 |
| 6.5.3. <i>Frequency Regulation Reserves, FRR-A (A)</i> | 14 |
| 6.5.4. <i>Frequency Regulation Capacity Market (F)</i> | 16 |
| 6.6. MESSAGE DIAGRAM..... | 17 |
| 6.7. SEGMENT TABLE | 18 |
| 6.8. DESCRIPTION OF SEGMENTS USED | 24 |
| 7. DETAILED DESCRIPTION OF THE MESSAGE | 27 |
| APPENDIX A - EXAMPLE OF AN EDIFACT MESSAGE (HOURLY BID) | 44 |
| APPENDIX B - EXAMPLE OF AN EDIFACT MESSAGE (BLOCK BID) | 46 |
| APPENDIX C - EXAMPLE OF AN EDIFACT MESSAGE (PROFILE BLOCK BID) | 47 |
| APPENDIX D - EXAMPLE OF AN EDIFACT MESSAGE (FLEXI BLOCK BID) | 48 |
| APPENDIX D - EXAMPLE OF AN EDIFACT MESSAGE (NORWEGIAN BALANCE REGULATION MARKET BID) | 49 |

1. INTRODUCTION

This document is an Implementation Guide (IG) for the Quote message, to be used in the power industry. The IG describes the EDIFACT-message QUOTES in detail. The message is sent between parties in the power industry and is used to provide system responsible and the power exchange with prices and quantities.

This IG is a part of the "Message handbook for Ediel", which contains a set of IG's for different messages used in the power industry and a functional description, which contains common descriptions for the different IG's. In the future several new IG's are planned.

In addition a Functional description is available, which contains common descriptions for the different Implementation Guides. This includes relationships between the different message types, use of codes and code lists, special conditions between countries (such as use of time zones), terms and notation, use of header and trailer segments (UNB and UNZ) etc.

2. GENERAL DESCRIPTION OF THE «QUOTE MESSAGE»

2.1. Functional Definition

A message which provides potential sellers with the ability to provide price, delivery schedule, and other conditions for potential sales of goods or services.

In the power industry the quote message is used for quotation in the regulation market towards the system operators and in the spot market towards the power exchange Nord Pool ASA.

2.2. Principles

- A potential seller may offer one or more goods items or services.
- A quotation may refer to goods items or services related to one or more delivery schedules, call-offs, etc.
- A quotation for cross border transactions may contain additional information for customs and/or statistical purposes.

The information is transferred as:

- General information including dates, periods and currencies
- Description of area or power plant
- Time period, quantity and price for each bid

3. REFERENCES

This Implementation guide is based on the following documents.

- [1] **Norsk veiledning i bruk av EDIFACT**, version 2.0, November 1991 with addition of January 1994.
- [2] UN/EDIFACT Draft directory, D.96A
- [3] Message handbook for Ediel, Functional description
- [4] **ISO 9735**, version 2, 1990.11.01

3.1. Precedence

If there should be any conflict regarding this Implementation guide or between this Implementation guide and other documents, the following precedence shall be used:

- 1 UN/EDIFACT Draft directory, D.96A [2]
- 2 The Functional description [3]
- 3 This Implementation guide.

In this Implementation guide the EDIFACT message type is described in different ways. If there should be any conflict regarding the different descriptions, the detailed description in the last chapter should be used.

4. QUALITY ASSURANCE

This document is written by EdiSys AS on behalf of Ediel. Members of the Ediel-organisation have taken part in its development throughout.

4.1. Version number

The Implementation Guide will have 2 levels of version numbering. This will be Version and Release. In addition there will be a Revision number.

- The Version number (first number) will be updated when there have been major changes like new versions of the message type.
- The Release number will be updated when there have been small changes to the IG, like adding new segments, new data elements etc. within the EDIFACT directory. These changes shall not influence existing implementations.
- The Revision number will be updated when there have been minor changes, like correction of examples, adding new codes etc. These changes shall not influence existing implementations.

4.2. Corrections from earlier versions

In addition to minor text corrections the following changes has been made to this version of the IG:

Corrections in version 3.3.B:

- Correction of example in Appendix C, i.e. removal of a second UNA segment.

Corrections in version 3.3.A:

- Addition of “D, Tertiary Disturbance Reserves” in UNH/0068.

Corrections from version 3.2.A:

- The number of repetitions of SG27 is increased from 50 to 1000 for the *Regulation Market (R)* and *Peak Load Capacity Market (L)*.

Corrections from version 3.1.A:

- Addition of new Functional Area Code, “A” (FRR-A Market - Frequency Regulation Reserves), in the UNH segment.
- All DTM examples containing hour 2400 have been replaced by 0000 the day after.
- Addition of Functional Area Code, “A” (FRR-A Market - Frequency Regulation Reserves), in the chapter 6.1, 6.4 and 6.5
- Addition of a new cue list for FRR-A in chapter 6.5
- Update of the rules in SG27/DTM and SG31/DTM

Corrections from version 3.0.A:

- Addition of example of Norwegian balance regulation market bid
- Addition of format qualifier 204 in SG0/DTM
- Correction of layout of text
- Bilateral Trading (**T**) and Frequency Regulation Capacity Market (**F**) have been moved from group *trade* to *Regulation Market*
- The markets using the segments in the detailed segment descriptions have been updated
- Addition of new “document name codes” in BGM/C002 1001:
 - SD1 Bid, daily market, day-1
 - SD2 Bid, daily market, day-2

Corrections from version 2.4.C:

- Addition of a new Functional area code:
 - **L** Peak Load Capacity Market
- Addition of segments and codes related to the Norwegian Frequency activated reserve market:
 - Addition of a new *Cue list* in chapter 6.5.
 - Addition of new *Document type codes* in BGM:
 - **N07** Bid, weekly market
 - **N08** Bid, daily market
 - **N09** Bid, hourly market
 - Addition of new *Quotation status codes* in LIN:
 - **37** Cancelled
 - **38** Replaced
 - Addition of new Request for quote number qualifier in SG32/RFF:
 - **AHU** Request for quote number
- A model for “Profile block bids” is added.
- The example in Appendix B is updated.
- An example of Profile block bids is added as Appendix C.
- An example of Flexi block bids is added as Appendix D.

Corrections from version 2.4.B:

- The term “Block number” is renamed “Block id”
- The attribute “Reference to related block id” is added to SG32/RFF

Corrections from version 2.4.A:

- A reference to “ISO 3166-1 two alpha country code” is added to NAD.

Corrections from version 2.3.E:

- A code for “Resting time” is added to SG27/DTM for the Regulation market.
- “Net area” is added as a new element in SG33/LOC for the Regulation market.

Corrections from version 2.3.D:

- SG33/LOC/C519 3222 is added for a description of the area connected to a split busbar connection.

Corrections from version 2.3.C:

- The number of repetitions of SG31 is increased from 25 to 99 repetitions.

Corrections from version 2.3.B:

- The code MWH (Megawatt-hour) is added to SG31/RNG.

Corrections from version 2.3.A:

- The classification of segments and segment groups are corrected in the message diagram.

Corrections from version 2.1.2:

- DE, NL and GB are added as country codes in the NAD segment.
- Some general paragraphs from chapter 1 are removed. This information will be found in the Functional description.
- The text in chapter 4.1, Version number, is changed to be more compliant with practice.
- The classification of data element 1225 in BGM is changed from “X” to “O”.
- The code “XEU - European Monetary Coop. Fund, (Euro)” is changed to “EUR - Euro” in the CUX segment.
- The term “Bidding area” is changed to only “Area”.
- Product code and information about new/corrected bids are added to the LIN segment.

- Segment group 32, with a RFF segment, is added to the IG. The segment is used for Block number and Quotation reference number.
- The “Balance adjustment market” is removed.

Corrections from version 2.1.1:

- Chapter 5.2 – Use of time period is added.

Corrections from version 2.1.0:

- Segment group 27 is corrected to have up to 1000 repetitions.

5. SPECIAL CONDITIONS

5.1. Corrections or cancellation of a Quotation

If you want to correct or cancel a quotation you have to send a new message concerning the same period (or a part of a period) as in the original message. If it is a correction the new values (i. e. quantities) have to be sent. If it is a cancellation you have to send zero values.

5.2. Use of time period

It is permitted to send the time period in the detailed section as an interval defining more than one hour unless another use is bilaterally agreed. If the time period defines more than one hour the quantity shall be per hour.

6. OVERVIEW OF THE MESSAGE

6.1. Data model for the Quote message

The Quote message is used for different functional areas such as trading and regulation market. The different functional areas require different use of the segment groups and segments. To make it easier to read this IG the data model and the cue list is divided into different figures and tables.

| | |
|-------------------|--|
| Trade | Elspot (S) |
| Regulation Market | Regulation Market (R) |
| | Peak Load Capacity Market (L) |
| | Bilateral Trading (T) |
| | Frequency Regulation Capacity Market (F) |
| | Frequency Regulation Reserves, FRR-A (A) |

6.2. Data model for Trade

Below is shown a data model for Trade in general:

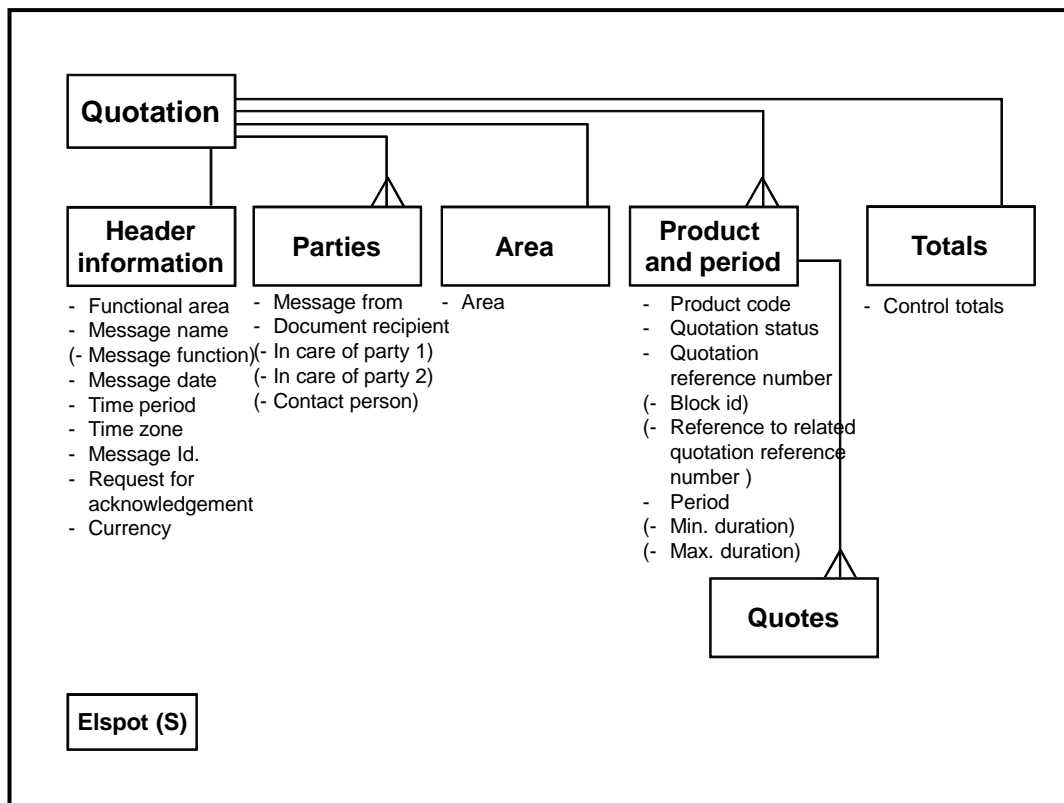


Figure 1 Data model for Trade

The Attributes in parentheses are conditional attributes and are not necessarily transferred.

6.3. Data model for Profile block bids

Below is shown a data model for Profile block bids:

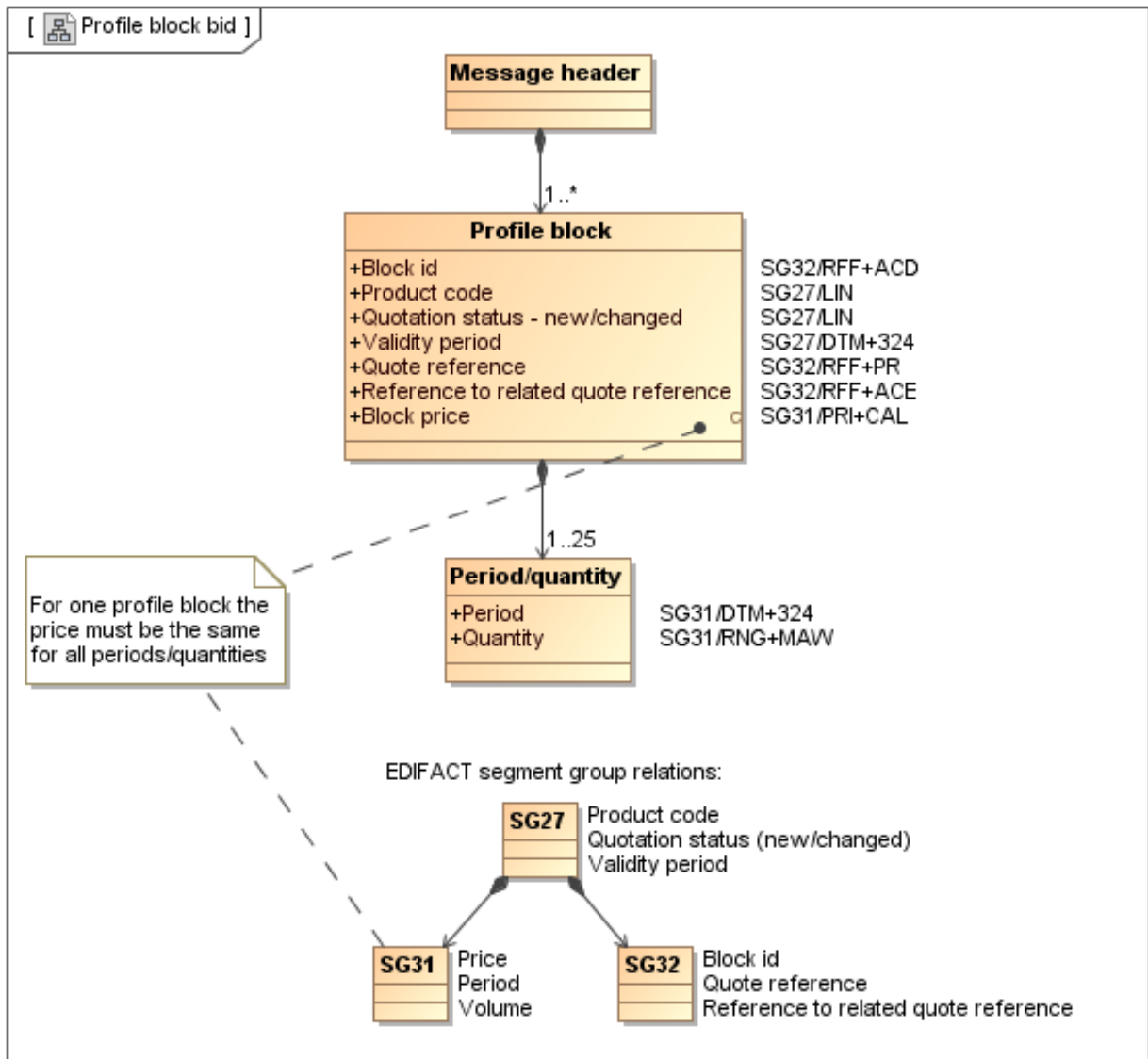


Figure 2 Data model for Profile block bid

6.4. Data model for the Regulation Market

Below is shown a data model for the Regulation Market, which includes Peak Load Capacity Market, Bilateral Trade, Frequency Regulation Capacity Market and Frequency Regulation Reserves (FRR-A).

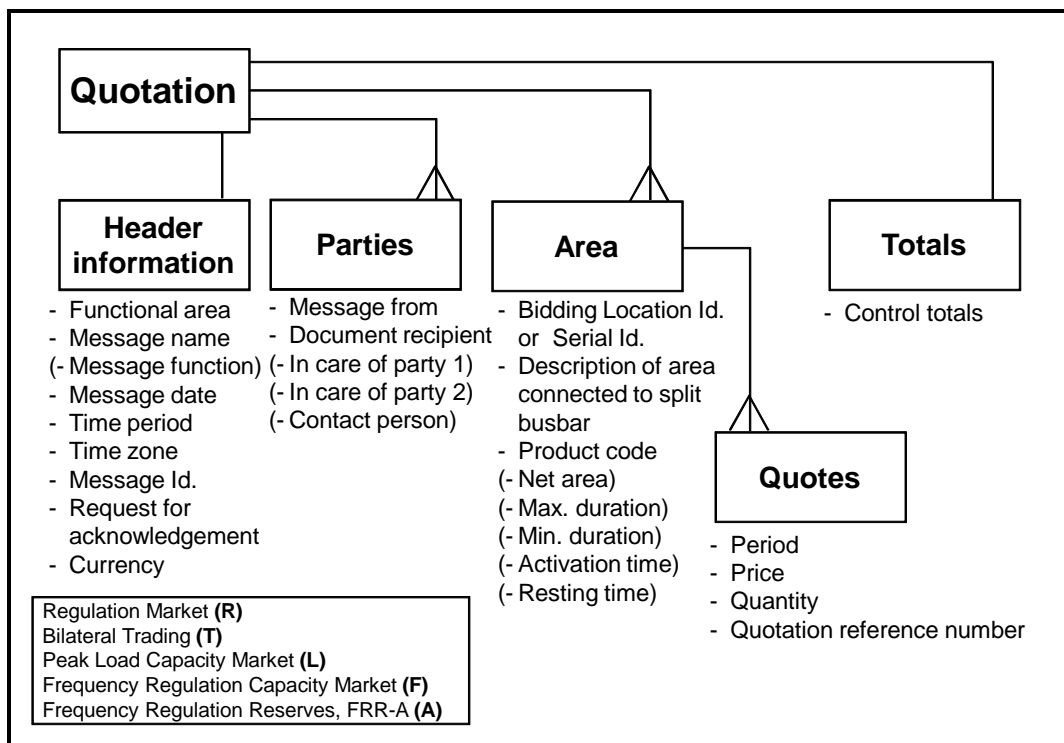


Figure 2 Data model for the Regulation Market

The Attributes in parentheses are conditional attributes and are not necessarily transferred.

6.5. Cue list

Below is a set of tables describing the EDIFACT message and the relationships to the attributes in the data model for the different markets.

6.5.1. Elspot (S).

| General information about the message for Elspot, | | | | |
|---|---|------|---|--|
| UNH | M | 1 | Message reference Message type Functional area | |
| BGM | M | 1 | Message name (Message function) Message Id. Request for acknowledgement | |
| DTM | M | 4 | Message date Time period start Time period stop Time zone | |
| Currency | | | | |
| SG 4 | D | 1 | | |
| CUX | M | 1 | Currency | |
| Parties and area | | | | |
| SG 11 | R | 4 | | |
| NAD | M | 1 | Message from Document recipient (In care of party 1) (In care of party 2) | |
| LOC | D | 1 | Area | |
| Contact person | | | | |
| SG 14 | D | 1 | | |
| CTA | M | 1 | (Contact person) | |
| Period | | | | |
| SG 27 | M | 1000 | | |
| LIN | M | 1 | Sequence no. Product code Quotation status (New/changed) | |
| DTM | D | 3 | Period (Maximum duration) (Minimum duration) | |
| Quotes and Price | | | | |
| SG 31 | R | 99 | | |
| PRI | M | 1 | Price | |
| RNG | R | 1 | Quantity | |
| DTM | D | 1 | (Period) | |
| References | | | | |
| SG 32 | D | 3 | | |
| RFF | M | 1 | Quotation reference number (Block id) (Reference to related quotation reference number) | |
| UNS | M | 1 | Section control | |
| CNT | R | 2 | Control totals (quantity and prices) | |
| UNT | M | 1 | Message trailer | |

As a minimum the segment groups (with corresponding segments) marked with R or M have to be used in every message.

6.5.2. Regulation Market (R) and Peak Load Capacity Market (L)

| General information about the message for the Regulation Market and Peak Load Capacity Market | | | | |
|---|---|------|---|--|
| UNH | M | 1 | Message reference Message type Functional area | |
| BGM | M | 1 | Message name (Message function) Message Id. Request for acknowledgement | |
| DTM | M | 4 | Message date Time period start Time period stop Time zone | |
| Currency | | | | |
| SG 4 | D | 1 | | |
| CUX | M | 1 | Currency | |
| Parties | | | | |
| SG 11 | R | 4 | | |
| NAD | M | 1 | Message from Document recipient (In care of party 1) (In care of party 2) | |
| Contact person | | | | |
| SG 14 | D | 1 | | |
| CTA | M | 1 | (Contact person) | |
| Area | | | | |
| SG 27 | M | 1000 | | |
| LIN | M | 1 | Sequence no. Product code | |
| DTM | D | 4 | (Maximum duration) (Minimum duration) (Activation time) (Resting time) | |
| Quotes, Price and Period | | | | |
| SG 31 | R | 99 | | |
| PRI | M | 1 | Price | |
| RNG | R | 1 | Quantity | |
| DTM | D | 1 | Period | |
| References | | | | |
| SG 32 | D | 2 | | |
| RFF | M | 1 | Quotation reference number | |
| Area | | | | |
| SG 33 | D | 1 | | |
| LOC | M | 1 | Bidding Location Id. or Serial Id. Description of area connected to split busbar Net area | |
| UNS | M | 1 | Section control | |
| CNT | R | 2 | Control totals (quantity and prices) | |
| UNT | M | 1 | Message trailer | |

As a minimum the segment groups (with corresponding segments) marked with R or M has to be used in every message.

6.5.3. Frequency Regulation Reserves, FRR-A (A)

| General information about the message for the Frequency Regulation Reserves, FRR-A | | | | |
|--|--|--|--|--|
|--|--|--|--|--|

| | | | |
|--------------------------|---|----|--|
| UNH | M | 1 | Message reference Message type Functional area |
| BGM | M | 1 | Message name (Message function) Message Id. Request for acknowledgement |
| DTM | M | 4 | Message date Time period start Time period stop Time zone |
| Currency | | | |
| SG 4 | D | 1 | |
| CUX | M | 1 | Currency |
| Parties | | | |
| SG 11 | R | 4 | |
| NAD | M | 1 | Message from Document recipient (In care of party 1) (In care of party 2) |
| Contact person | | | |
| SG 14 | D | 1 | |
| CTA | M | 1 | (Contact person) |
| Area | | | |
| SG 27 | M | 50 | |
| LIN | M | 1 | Sequence no. Product code |
| DTM | D | 1 | (Minimum duration) |
| Quotes, Price and Period | | | |
| SG 31 | R | 99 | |
| PRI | M | 1 | Price |
| RNG | R | 1 | Quantity |
| DTM | D | 1 | Period |
| References | | | |
| SG 32 | D | 2 | |
| RFF | M | 1 | Quotation reference number |
| Area | | | |
| SG 33 | D | 1 | |
| LOC | M | 1 | Station Group Identification, Elspot Area Identification or other Area Identification |
| UNS | M | 1 | Section control |
| CNT | R | 2 | Control totals (quantity and prices) |
| UNT | M | 1 | Message trailer |

As a minimum the segment groups (with corresponding segments) marked with R or M has to be used in every message.

6.5.4. Frequency Regulation Capacity Market (F)

| General information about the message for Frequency Regulation Capacity Market | | | | |
|--|---|------|--|--|
| UNH | M | 1 | Message reference Message type Functional area | |
| BGM | M | 1 | Message name (Message function) Message Id. Request for acknowledgement | |
| DTM | M | 4 | Message date Time period start Time period stop Time zone | |
| Currency | | | | |
| SG 4 | D | 1 | | |
| CUX | M | 1 | Currency | |
| Parties and area | | | | |
| SG 11 | R | 2 | | |
| NAD | M | 1 | Message from Document recipient | |
| LOC | D | 1 | Area | |
| Details | | | | |
| SG 27 | M | 1000 | | |
| LIN | M | 1 | Sequence no. Product code Quotation status (New/changed) (Minimum duration) | |
| DTM | D | 1 | | |
| Quote, Price and Period | | | | |
| SG 31 | R | 99 | | |
| PRI | M | 1 | Bid Price | |
| RNG | R | 1 | Delivery Quantity | |
| | R | | Delivery Measurement Unit | |
| DTM | D | 1 | Delivery Time Period | |
| References | | | | |
| SG 32 | R | 2 | | |
| RFF | M | 1 | Bid Reference Identification (Quotation reference number) | |
| | D | 1 | Product Ticker | |
| Area | | | | |
| SG 33 | D | 1 | | |
| LOC | M | 1 | Station Group Identification or Elspot Area Identification | |
| UNS | M | 1 | Section control | |
| CNT | R | 2 | Control totals (quantity and prices) | |
| UNT | M | 1 | Message trailer | |

As a minimum the segment groups (with corresponding segments) marked with R or M has to be used in every message.

6.6. Message diagram

The Message diagram below shows the subset of the EDIFACT message that is used in this IG. All segments and segment groups are shown according to the classification in this subset. For a complete overview of the EDIFACT message, please see the next chapter (segment table).

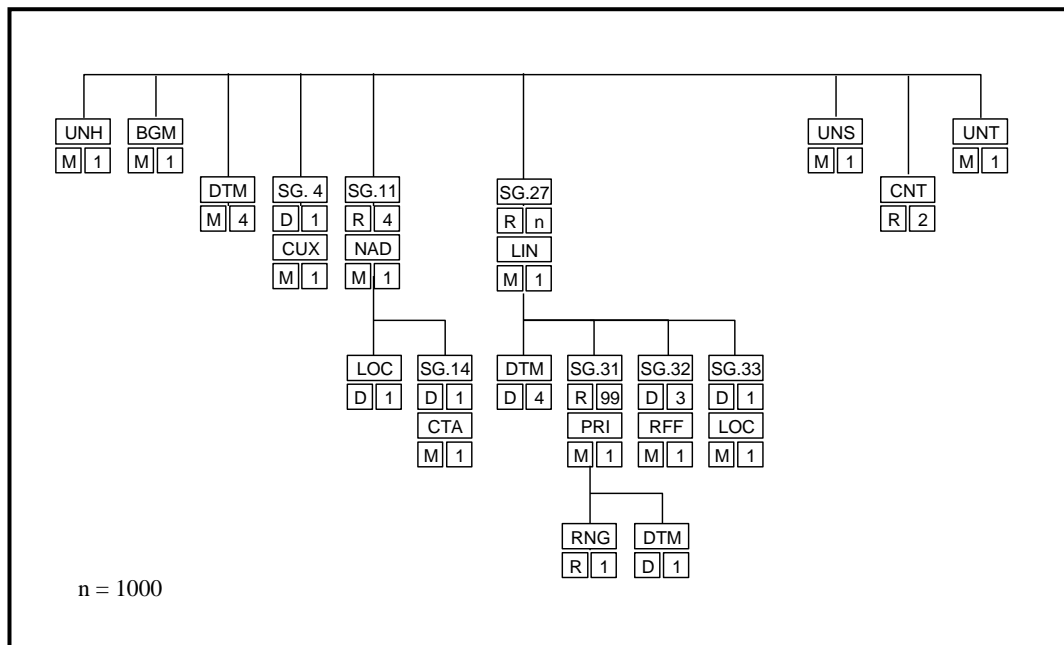


Figure 3 Message diagram for the Quotes message

6.7. Segment table

In this chapter the segment table for the Quotes message (QUOTES) is shown by the way it is described in version D, release 96A of the EDIFACT directory. The segments and segment groups that are used in this IG are shown in bold type.

HEADER SECTION

| | | | | |
|-----|--------------------------------|---|----|--------|
| UNH | Message header | M | 1 | |
| BGM | Beginning of message | M | 1 | |
| DTM | Date/time/period | M | 35 | |
| PAI | Payment instructions | C | 1 | |
| ALI | Additional information | C | 5 | |
| IMD | Item description | C | 1 | |
| IRQ | Information required | C | 10 | |
| FTX | Free text | C | 99 | |
| | ----- Segment group 1 ----- | C | 10 | -----+ |
| RFF | Reference | M | 1 | |
| DTM | Date/time/period | C | 5 | -----+ |
| | ----- Segment group 2 ----- | C | 1 | -----+ |
| AJT | Adjustment details | M | 1 | |
| FTX | Free text | C | 5 | -----+ |
| | ----- Segment group 3 ----- | C | 5 | -----+ |
| TAX | Duty/tax/fee details | M | 1 | |
| MOA | Monetary amount | C | 1 | |
| LOC | Place/location identification | C | 5 | -----+ |
| | ----- Segment group 4 ----- | C | 5 | -----+ |
| CUX | Currencies | M | 1 | |
| PCD | Percentage details | C | 5 | |
| DTM | Date/time/period | C | 5 | -----+ |
| | ----- Segment group 5 ----- | C | 10 | -----+ |
| PAT | Payment terms basis | M | 1 | |
| DTM | Date/time/period | C | 5 | |
| PCD | Percentage details | C | 1 | |
| MOA | Monetary amount | C | 1 | -----+ |
| | ----- Segment group 6 ----- | C | 10 | -----+ |
| TOD | Terms of delivery or transport | M | 1 | |
| LOC | Place/location identification | C | 2 | -----+ |
| | ----- Segment group 7 ----- | C | 10 | -----+ |
| EQD | Equipment details | M | 1 | |
| HAN | Handling instructions | C | 5 | |
| MEA | Measurements | C | 5 | |
| FTX | Free text | C | 5 | -----+ |
| | ----- Segment group 8 ----- | C | 10 | -----+ |
| RCS | Requirements and conditions | M | 1 | |
| RFF | Reference | C | 5 | |
| DTM | Date/time/period | C | 5 | |

MESSAGE HANDBOOK FOR EDIEL
Implementation guide for the Quote message

| | | |
|---------------------------------------|---|----------|
| FTX Free text | C | 5-----+ |
| ----- Segment group 9 ----- | C | 25-----+ |
| APR Additional price information | M | 1 |
| PRI Price details | C | 1 |
| QTY Quantity | C | 2 |
| DTM Date/time/period | C | 1 |
| MOA Monetary amount | C | 2 |
| RNG Range details | C | 2-----+ |
| ----- Segment group 10 ----- | C | 1-----+ |
| DLM Delivery limitations | M | 1 |
| MOA Monetary amount | C | 1 |
| DTM Date/time/period | C | 1-----+ |
| ----- Segment group 11 ----- | C | 99-----+ |
| NAD Name and address | M | 1 |
| LOC Place/location identification | C | 25 |
| FII Financial institution information | C | 5 |
| ----- Segment group 12 ----- | C | 10-----+ |
| RFF Reference | M | 1 |
| DTM Date/time/period | C | 5 |
| LOC Place/location identification | C | 5-----+ |
| ----- Segment group 13 ----- | C | 5-----+ |
| DOC Document/message details | M | 1 |
| DTM Date/time/period | C | 1-----+ |
| ----- Segment group 14 ----- | C | 5-----+ |
| CTA Contact information | M | 1 |
| COM Communication contact | C | 5-----+ |
| ----- Segment group 15 ----- | C | 10-----+ |
| TDT Details of transport | M | 1 |
| QTY Quantity | C | 5 |
| ----- Segment group 16 ----- | C | 10-----+ |
| LOC Place/location identification | M | 1 |
| DTM Date/time/period | C | 5-----+ |
| ----- Segment group 17 ----- | C | 10-----+ |
| PAC Package | M | 1 |
| MEA Measurements | C | 5 |
| ----- Segment group 18 ----- | C | 10-----+ |
| PCI Package identification | M | 1 |
| RFF Reference | C | 1 |
| DTM Date/time/period | C | 5 |
| GIN Goods identity number | C | 10-----+ |
| ----- Segment group 19 ----- | C | 10-----+ |
| SCC Scheduling conditions | M | 1 |
| FTX Free text | C | 5 |

MESSAGE HANDBOOK FOR EDIEL
Implementation guide for the Quote message

| | | |
|------------------------------|---|----------|
| ----- Segment group 20 ----- | C | 10-----+ |
| QTY Quantity | M | 1 |
| DTM Date/time/period | C | 5-----+ |
| ----- Segment group 21 ----- | C | 15-----+ |
| ALC Allowance or charge | M | 1 |
| ALI Additional information | C | 5 |
| DTM Date/time/period | C | 5 |
| ----- Segment group 22 ----- | C | 1-----+ |
| QTY Quantity | M | 1 |
| RNG Range details | C | 1-----+ |
| ----- Segment group 23 ----- | C | 1-----+ |
| PCD Percentage details | M | 1 |
| RNG Range details | C | 1-----+ |
| ----- Segment group 24 ----- | C | 2-----+ |
| MOA Monetary amount | M | 1 |
| RNG Range details | C | 1-----+ |
| ----- Segment group 25 ----- | C | 1-----+ |
| RTE Rate details | M | 1 |
| RNG Range details | C | 1-----+ |
| ----- Segment group 26 ----- | C | 5-----+ |
| TAX Duty/tax/fee details | M | 1 |
| MOA Monetary amount | C | 1-----+ |

DETAIL SECTION

| | | |
|------------------------------------|---|--------------|
| ----- Segment group 27 ----- | M | 200000-----+ |
| LIN Line item | M | 1 |
| PIA Additional product id | C | 25 |
| IMD Item description | C | 99 |
| MEA Measurements | C | 5 |
| QTY Quantity | C | 5 |
| PCD Percentage details | C | 1 |
| ALI Additional information | C | 5 |
| DTM Date/time/period | C | 35 |
| GIN Goods identity number | C | 1000 |
| GIR Related identification numbers | C | 1000 |
| QVR Quantity variances | C | 1 |
| FTX Free text | C | 99 |
| DGS Dangerous goods | C | 1 |
| PAI Payment instructions | C | 1 |
| DOC Document/message details | C | 1 |
| ----- Segment group 28 ----- | C | 999-----+ |
| CCI Characteristic/class id | M | 1 |
| CAV Characteristic value | C | 10 |
| MEA Measurements | C | 10-----+ |
| ----- Segment group 29 ----- | C | 100-----+ |
| MOA Monetary amount | M | 1 |

MESSAGE HANDBOOK FOR EDIEL
Implementation guide for the Quote message

| | | | | |
|-----|--------------------------------|---|-----|--------|
| QTY | Quantity | C | 2 | |
| IMD | Item description | C | 1 | |
| CUX | Currencies | C | 1 | |
| DTM | Date/time/period | C | 2 | -----+ |
| | ----- Segment group 30 ----- | C | 1 | -----+ |
| AJT | Adjustment details | M | 1 | |
| FTX | Free text | C | 5 | -----+ |
| | ----- Segment group 31 ----- | C | 99 | -----+ |
| PRI | Price details | M | 1 | |
| APR | Additional price information | C | 1 | |
| RNG | Range details | C | 1 | |
| CUX | Currencies | C | 5 | |
| DTM | Date/time/period | C | 5 | -----+ |
| | ----- Segment group 32 ----- | C | 99 | -----+ |
| RFF | Reference | M | 1 | |
| DTM | Date/time/period | C | 5 | -----+ |
| | ----- Segment group 33 ----- | C | 100 | -----+ |
| LOC | Place/location identification | M | 1 | |
| QTY | Quantity | C | 1 | |
| DTM | Date/time/period | C | 5 | -----+ |
| | ----- Segment group 34 ----- | C | 10 | -----+ |
| TAX | Duty/tax/fee details | M | 1 | |
| MOA | Monetary amount | C | 1 | |
| LOC | Place/location identification | C | 5 | -----+ |
| | ----- Segment group 35 ----- | C | 5 | -----+ |
| TOD | Terms of delivery or transport | M | 1 | |
| LOC | Place/location identification | C | 2 | -----+ |
| | ----- Segment group 36 ----- | C | 10 | -----+ |
| EQD | Equipment details | M | 1 | |
| HAN | Handling instructions | C | 5 | |
| MEA | Measurements | C | 5 | |
| FTX | Free text | C | 5 | -----+ |
| | ----- Segment group 37 ----- | C | 10 | -----+ |
| RCS | Requirements and conditions | M | 1 | |
| RFF | Reference | C | 5 | |
| DTM | Date/time/period | C | 5 | |
| FTX | Free text | C | 5 | -----+ |
| | ----- Segment group 38 ----- | C | 10 | -----+ |
| PAT | Payment terms basis | M | 1 | |
| DTM | Date/time/period | C | 5 | |
| PCD | Percentage details | C | 1 | |
| MOA | Monetary amount | C | 1 | -----+ |
| | ----- Segment group 39 ----- | C | 10 | -----+ |
| PAC | Package | M | 1 | |
| MEA | Measurements | C | 5 | |

MESSAGE HANDBOOK FOR EDIEL
Implementation guide for the Quote message

| | | | | |
|-----|-------------------------------|---|----|--------|
| QTY | Quantity | C | 5 | |
| DTM | Date/time/period | C | 5 | |
| | ----- Segment group 40 ----- | C | 5 | -----+ |
| RFF | Reference | M | 1 | |
| DTM | Date/time/period | C | 5 | -----+ |
| | ----- Segment group 41 ----- | C | 10 | -----+ |
| PCI | Package identification | M | 1 | |
| RFF | Reference | C | 1 | |
| DTM | Date/time/period | C | 5 | |
| GIN | Goods identity number | C | 10 | -----+ |
| | ----- Segment group 42 ----- | C | 99 | -----+ |
| NAD | Name and address | M | 1 | |
| LOC | Place/location identification | C | 5 | |
| | ----- Segment group 43 ----- | C | 5 | -----+ |
| RFF | Reference | M | 1 | |
| DTM | Date/time/period | C | 5 | -----+ |
| | ----- Segment group 44 ----- | C | 5 | -----+ |
| DOC | Document/message details | M | 1 | |
| DTM | Date/time/period | C | 5 | -----+ |
| | ----- Segment group 45 ----- | C | 5 | -----+ |
| CTA | Contact information | M | 1 | |
| COM | Communication contact | C | 5 | -----+ |
| | ----- Segment group 46 ----- | C | 99 | -----+ |
| ALC | Allowance or charge | M | 1 | |
| ALI | Additional information | C | 5 | |
| DTM | Date/time/period | C | 5 | |
| | ----- Segment group 47 ----- | C | 10 | -----+ |
| QTY | Quantity | M | 1 | |
| RNG | Range details | C | 1 | -----+ |
| | ----- Segment group 48 ----- | C | 10 | -----+ |
| PCD | Percentage details | M | 1 | |
| RNG | Range details | C | 1 | -----+ |
| | ----- Segment group 49 ----- | C | 10 | -----+ |
| MOA | Monetary amount | M | 1 | |
| RNG | Range details | C | 1 | -----+ |
| | ----- Segment group 50 ----- | C | 10 | -----+ |
| RTE | Rate details | M | 1 | |
| RNG | Range details | C | 1 | -----+ |
| | ----- Segment group 51 ----- | C | 5 | -----+ |
| TAX | Duty/tax/fee details | M | 1 | |
| MOA | Monetary amount | C | 1 | -----+ |
| | ----- Segment group 52 ----- | C | 10 | -----+ |

| | | | | | |
|-----|-------------------------------|---|-----|-------|--|
| TDT | Details of transport | M | 1 | | |
| QTY | Quantity | C | 5 | | |
| | ----- Segment group 53 ----- | C | 10 | ----- | |
| LOC | Place/location identification | M | 1 | | |
| DTM | Date/time/period | C | 5 | ----- | |
| | ----- Segment group 54 ----- | C | 100 | ----- | |
| SCC | Scheduling conditions | M | 1 | | |
| FTX | Free text | C | 5 | | |
| | ----- Segment group 55 ----- | C | 10 | ----- | |
| QTY | Quantity | M | 1 | | |
| DTM | Date/time/period | C | 5 | ----- | |

SUMMARY SECTION

| | | | | | |
|-----|------------------------------|---|----|-------|--|
| UNS | Section control | M | 1 | | |
| MOA | Monetary amount | C | 15 | | |
| CNT | Control total | C | 10 | | |
| | ----- Segment group 56 ----- | C | 10 | ----- | |
| ALC | Allowance or charge | M | 1 | | |
| MOA | Monetary amount | M | 1 | | |
| ALI | Additional information | C | 1 | ----- | |
| UNT | Message trailer | M | 1 | | |

6.8. Description of segments used

The segments and segment groups used in this IG are described below. The description is copied from version D, release 96A of the UN/EDIFACT directory. *The way Ediel uses the segments are described in the next chapter.*

Header section

Information to be provided in the Header section:

UNH, Message header

A service segment starting and uniquely identifying a message. The message type code for the Quote message is QUOTES.

Note: Quote messages conforming to this document must contain the following data in segment UNH, composite S009:

| | |
|--------------|-------------|
| Data element | 0065 QUOTES |
| | 0052 D |
| | 0054 96A |
| | 0051 UN |

BGM, Beginning of message

A segment by which the sender must uniquely identify the quotation by means of its type and number and when necessary its function.

DTM, Date/time/period

A segment specifying general dates and, when relevant, times related to the whole message. The segment must be specified at least once to identify the request date.

Examples of the use of this DTM segment are: Date the quotation was made, and the last date the quotation will be valid.

The Date/Time/Period segment within other Segment group should be used whenever the date/time/period requires to be logically related to another specified data item e. g. Payment due date is specified within the PAT Segment group.

Segment group 4: CUX

A group of segments specifying the currencies and related dates/time/period valid for the whole quotation. Currency data may be omitted in national applications, but will be required for international transactions.

CUX, Currencies

A segment identifying the currencies relevant in the quotation, e. g. the quotation currency. A rate of exchange may be given to convert a reference currency into a target currency.

Segment group 11: NAD-LOC-SG14

A group of segments identifying the parties with associated information.

NAD, Name and address

A segment identifying names and addresses of the parties, in coded or clear form, and their functions relevant to the proposed quotation.

Identification of the seller and buyer parties is Mandatory for a quotation. It is recommended that where possible only the coded form of the party ID should be specified, e. g. The Buyer and Seller

are known to each other, thus only the coded ID is required, but the Consignee or Delivery address may vary and would have to be clearly specified, preferably in structured format.

LOC, Place/location identification

A segment giving more specific location information of the party specified in the NAD segment e. g. internal site/building number.

Segment group 14: CTA

A group of segments giving contact details of the specific person or department within the party identified in the NAD segment.

CTA, Contact information

A segment to identify a person or department, and their function, to whom communications should be directed.

Detail section

Information to be provided in the Detail section:

Segment group 27: LIN-DTM-FTX-SG31-SG33

A group of segments providing details of the individual requested items. There must be at least one occurrence of Segment group 27 within a quotation. This Segment group may be repeated to give sub-line details.

LIN, Line item

A segment identifying the line item by the line number and configuration level, and additionally, identifying the product or service quoted. Other product identification numbers, e. g. Buyer product number, etc. can be specified within the following PIA segment.

DTM, Date/time/period

A segment specifying date/time/period details relating to the line item only.

Segment group 31: PRI-RNG-DTM

A group of segments identifying the relevant pricing information for the goods or services quoted.

PRI, Price details

A segment to specify the price type and amount. The price used in the calculation of the line amount will be identified as one of the calculation prices.

RNG, Range details

A segment to identify the ranges (quantity, amount, etc.) to which the additional price information applies.

DTM, Date/time/period

A segment to identify the date/time/period information related to the price change. e. g. period of validity.

Segment group 32: RFF-DTM

A group of segments giving references and where necessary, their dates.

RFF, Reference

A segment identifying the reference by its number and where appropriate a line number within a document.

Segment group 33: LOC

A group of segments specifying destination and quantity details for consignments involving multi destination deliveries.

LOC, Place/location identification

A segment indicating the location to which part of the consignment is to be delivered.

Summary section

Information to be provided in the Summary section:

UNS, Section control

A service segment placed before the first user data segment in the summary section.

CNT, Control total

A segment by which control totals may be provided by the sender for checking by the receiver.

UNT, Message trailer

A service segment ending a message, giving the total number of segments in the message and the control reference number of the message.

7. DETAILED DESCRIPTION OF THE MESSAGE

In this chapter all segments and segment groups are specified in detail. In the left column you will find a list of the attributes used.

The EDIFACT segments listed are copies of those defined in the original UN/EDIFACT directory except for data elements defined as conditional (C) which are redefined using the classification described in the Functional Description [3].

| | | MESSAGE: QUOTES | | SG 0 | | |
|-------------------|---|------------------------|---|-------------|--------|---|
| | | Function: | In the power industry the quote message is used for quotation towards different markets and functional areas. | | | |
| | | Segments: | UNH, BGM, DTM | | | |
| | | UNH | Message header | | | |
| | | Function: | A service segment to start and identify a message. | | | |
| | | Classification: | Mandatory (M1). | | | |
| | | Comments: | | | | |
| | | Example: | UNH+1+QUOTES:D:96A:UN:EDIEL2+S' | | | |
| Message-reference | > | 0062 | MESSAGE REFERENCE NUMBER | M | an..14 | The message reference uniquely identifies the message in the interchange. This can for instance be done by using a sequence number that identifies each message in the interchange. The first message will have reference no. 1, the second message will have reference 2, etc. The reference can be set to 1 in the first message of the next interchange. |
| Message-type | > | S009 | MESSAGE IDENTIFIER | M | | |
| | | 0065 | Message type identifier | M | an..6 | Code: D |
| | | 0052 | Message type version number | M | an..3 | Code: D |
| | | 0054 | Message type release number | M | an..3 | Code: 96A |
| | | 0051 | Controlling agency | M | an..2 | Code: UN |
| | | 0057 | Association assigned code | R | an..6 | Code: EDIEL2 |
| Functional area | > | 0068 | COMMON ACCESS REFERENCE | R | an..35 | A FRR-A Market (Frequency Regulation Reserves) D <u>Tertiary Disturbance Reserves</u> F Frequency Regulation Capacity Market L Peak Load Capacity Market R Regulation Market S Elspot T Bilateral Trading |
| | | S010 | STATUS OF THE TRANSFER | X | | |
| | | 0070 | Sequence message transfer number | X | n..2 | |
| | | 0073 | First/last seq. mess. transfer. indicator. | X | a1 | |

BGM Beginning of message
Function: A segment for the unique identification of the Quote message, by means of its name and its number.
Classification: Mandatory (M1).
Comments:
Example: BGM+310+Q12345+9+AB'

| Ref. | Name | Cl. | Form. | Description |
|------------------------------|-------------------------------------|-----|--------|---|
| C002 | DOCUMENT/MESSAGE NAME | R | | |
| > 1001 | Document/message name, coded | R | an..3 | Code: 310 Offer/quotation N07 Bid, weekly market N08 Bid, daily market N09 Bid, hourly market SD1 Bid, daily market, day-1 SD2 Bid, daily market, day-2 |
| 1131 | Code list qualifier | X | an..3 | |
| 3055 | Code list responsible agency, coded | X | an..3 | |
| 1000 | Document/message name | X | an..35 | |
| Message Id. > | 1004 DOCUMENT/MESSAGE NUMBER | R | an..35 | Unique Id. of the message. Shall be unique over time for each party. |
| Message function > | 1225 MESSAGE FUNCTION, CODED | O | an..3 | Code: 5 Replace of a previously sent message. 9 Original message. |
| Request for acknowledgment > | 4343 RESPONSE TYPE, CODED | R | an..3 | Code: AB Message acknowledgement is required (APERAK). NA No acknowledgement needed |

DTM Date/time/period
Function: A segment specifying the date, and the time/period of the document, the beginning and ending of the processing date/period of the document, and if necessary a correction date/time.
Classification: Mandatory (M4).
Comments: All four repetitions are required. See the Functional description for a description on the use of Time Zone.
Example: DTM+137:199904231205:203'

Message date and Processing date/period

>

| Ref. | Name | Cl. | Form. | Description |
|------|-----------------------------------|-----|--------|--|
| C507 | DATE/TIME/PERIOD | M | | |
| 2005 | Date/time/period qualifier | M | an..3 | Code: 137 Message date 163 Processing start date/time 164 Processing end date/time ZZZ Offset to UTC (GMT) |
| 2380 | Date/time/period | R | an..35 | Date/time/period |
| 2379 | Date/time/period format qualifier | R | an..3 | Code: 203 CCYYMMDDHHmm, (137, 163, 164) <u>204 CCYYMMDDHHmmss (137)</u> 805 Hour, (ZZZ) |

☐

MESSAGE: QUOTES

SG 4

Function: A group of segments specifying the Currency valid for the whole quotation.

Classification: Dependent (D1).

Comments: Currency data may be omitted in national applications, but will be required for international transactions.

Segments: CUX

CUX Currencies

Function: A segment identifying the Currency relevant in the quotation, e. g. the quotation currency.

Classification: Mandatory (M1).

Comments:

Example: CUX+2:SEK'

Currency >

| Ref. | Name | Cl. | Form. | Description |
|--------------------------------------|---|-----------------------|---------------------------------|--|
| C504 6347 | CURRENCY DETAILS Currency details qualifier | R M | an..3 | Currency details qualifier Code: 2 Reference currency (The currency applicable to amounts or prices stated. It may have to be converted). |
| 6345 | Currency, coded | R | an..3 | ISO currency code Code: DEM Germany - Deutsche Mark DKK Denmark - Krone FIM Finland - Markka NLG Netherlands - Guilder NOK Norwegian - Krone RUR Russia - Ruble SEK Sweden - Krona EUR Euro |
| 6343 | Currency qualifier | X | an..3 | |
| 6348 | Currency rate base | X | n..4 | |
| C504 6347 6345 6343 6348 | CURRENCY DETAILS Currency details qualifier Currency, coded Currency qualifier Currency rate base | X X X X X | an..3 an..3 an..3 n..4 | |
| 5402 | RATE OF EXCHANGE | X | n..12 | |
| 6341 | CURRENCY MARKET EXCHANGE, CODED | X | an..3 | |
| | | | | |

| | | |
|-----------------|--|--------------|
| □ | MESSAGE: QUOTES | SG 11 |
| Function: | A group of segments identifying names, addresses, locations, and contacts relevant to the whole message. | |
| Classification: | Required (R4). | |
| Comments: | Two repetitions are required. | |
| Segments: | NAD, LOC, SG 14 | |

NAD Name and address
Function: A segment for identifying names and addresses and their functions relevant for the whole message.
Classification: Mandatory (M1).
Comments:

- See the Functional description for a description of the use of data elements C082 1131 and C082 3055.
- Code «FR» and «DO» in data element 3035 are required

Example: NAD+FR+123456789:NO3:82++++OSLO++++NO'

| Ref. | Name | Cl. | Form. | Description |
|------|-------------------------------------|-----|--------|--|
| 3035 | PARTY QUALIFIER | M | an..3 | Code: FR Message from DO Document recipient C1 In care of party no. 1 C2 In care of party no. 2 |
| C082 | PARTY IDENTIFICATION DETAILS | R | | |
| 3039 | Party id identification | M | an..35 | Party identification |
| 1131 | Code list qualifier | D | an..3 | Code: 100 Enhanced party identification 160 Party identification NO3 Company registration no. from «Foretaksregisteret» in Norway |
| 3055 | Code list responsible agency, coded | R | an..3 | Code: SM Nord Pool ASA SVK Svenska Kraftnät 82 «Enhetsregisteret» in Norway SLY Finnish Electricity Association EDI Other Id. than power plant 9 GS1 |
| C058 | NAME AND ADDRESS | X | | |
| 3124 | Name and address line | X | an..35 | |
| 3124 | Name and address line | X | an..35 | |
| 3124 | Name and address line | X | an..35 | |
| 3124 | Name and address line | X | an..35 | |
| 3124 | Name and address line | X | an..35 | |
| C080 | PARTY NAME | X | | |
| 3036 | Party name | X | an..35 | |
| 3036 | Party name | X | an..35 | |
| 3036 | Party name | X | an..35 | |
| 3036 | Party name | X | an..35 | |
| 3036 | Party name | X | an..35 | |
| 3045 | Party name format, coded | X | an..3 | |
| C059 | STREET | X | | |
| 3042 | Street and number/P.O. Box | X | an..35 | |

| | | | | | | |
|---------|---|------|-----------------------------------|---|--------|--|
| | | 3042 | Street and number/P.O. Box | X | an..35 | |
| | | 3042 | Street and number/P.O. Box | X | an..35 | |
| Place | > | 3164 | CITY NAME | O | an..35 | Place (for generation of message) |
| | | 3229 | COUNTRY SUB-ENTITY IDENTIFICATION | X | an..9 | |
| Country | | 3251 | POSTCODE IDENTIFICATION | X | an..9 | |
| | > | 3207 | COUNTRY, CODED | O | an..3 | Code: Use ISO 3166-1 two alpha country code, e.g.: DK Denmark FI Finland DE Germany NL Netherlands NO Norway SE Sweden GB United Kingdom |

LOC Place/location identification
 Function: A segment identifying an area
 Classification: Dependent (D1).
 Comments: Only to be used in Elspot (S).
 Example: LOC+105+NO2::SM'

| Ref. | Name | Cl. | Form. | Description |
|------|---|-----|--------|-----------------------------------|
| 3227 | PLACE/LOCATION QUALIFIER | M | an..3 | Code: 105 Place of consumption |
| C517 | LOCATION IDENTIFICATION | R | | |
| 3225 | Place/location identification | R | an..25 | Area |
| 1131 | Code list qualifier | X | an..3 | |
| 3055 | Code list responsible agency, coded | R | an..3 | Code: SM Nord Pool ASA |
| 3224 | Place/location | X | an..70 | |
| C519 | RELATED LOCATION ONE IDENTIFICATION | X | | |
| 3223 | Related place/location one identification | X | an..25 | |
| 1131 | Code list qualifier | X | an..3 | |
| 3055 | Code list responsible agency, coded | X | an..3 | |
| 3222 | Related place/location one | X | an..70 | |
| C553 | RELATED LOCATION TWO IDENTIFICATION | X | | |
| 3233 | Related place/location two identification | X | an..25 | |
| 1131 | Code list qualifier | X | an..3 | |
| 3055 | Code list responsible agency, coded | X | an..3 | |
| 3232 | Related place/location two | X | an..70 | |
| 5479 | RELATION, CODED | X | an..3 | |

□

MESSAGE: QUOTES

SG 14

Function: A group of segments to identify people, or departments.
 Classification: Dependent (D1).
 Comments: Normally used for sender (code «FR» in NAD, SG. 11).
 Segments: CTA

CTA Contact information
 Function: A segment to identify the person, or department to whom personal communication should be directed.
 Classification: Mandatory (M1).
 Comments: «MR» is used together with «DO» in NAD, SG. 11
 «MS» is used together with «FR» in NAD, SG. 11
 «IC» is used together with «C1» in NAD, SG. 11
 Example: CTA+MS+:Ole Olsen'

| Ref. | Name | Cl. | Form. | Description |
|------|---------------------------------------|-----|--------|--|
| 3139 | CONTACT FUNCTION, CODED | R | an..3 | Code: MR Message recipient contact MS Message sender contact IC |
| C056 | DEPARTMENT OR EMPLOYEE DETAILS | R | | |
| 3413 | Department or employee identification | X | an..17 | |
| 3412 | Department or employee | R | an..35 | Contact person or department |

Contact >

| | | MESSAGE: QUOTES | | | SG 27 | |
|--------------|------------------|------------------------|---|-------------------------------------|--------------|---|
| | | Function: | A group of segments providing details of the individual requested items. | | | |
| | | Classification: | Mandatory (M1000). | | | |
| | | Comments: | | | | |
| | | Segments: | LIN, DTM, SG 31, SG 33 | | | |
| | | LIN | Line item | | | |
| | | Function: | A segment identifying the line item by the line number. | | | |
| | | Classification: | Mandatory (M1). | | | |
| | | Comments: | <ul style="list-style-type: none"> Data element 1229 is required for Block bids to the Elspot market (S). For other markets the use must be specified bilaterally. Composite element C212 is required for all bids to the Elspot market (S). For other markets the use must be specified bilaterally. | | | |
| | | Example: | LIN+1+39+1600:::SM' | | | |
| Sequence no. | > | 1082 | LINE ITEM NUMBER | R | n..6 | Sequence no. |
| | Quotation status | > | 1229 | ACTION REQUEST/ NOTIFICATION, CODED | D | an..3 |
| Product code | > | C212 | ITEM NUMBER IDENTIFICATION | D | | |
| | | 7140 | Item number | R | an..35 | Code: (See separate code lists) |
| | | 7143 | Item number type, coded | X | an..3 | |
| | | 1131 | Code list qualifier | X | an..3 | |
| | | 3055 | Code list responsible agency, coded | R | an..3 | Code: 9 GS1 ELT Eltra EKS Elkraft SLY Finnish Electricity Association SM Nord Pool ASA SVK Svenska Kraftnät |
| | | C829 | SUB-LINE INFORMATION | X | | |
| | | 5495 | Sub-line indicator, coded | X | an..3 | |
| | 1082 | Line item number | X | n..6 | | |
| | 1222 | CONFIGURATION LEVEL | X | n..2 | | |
| | 7083 | CONFIGURATION, CODED | X | an..3 | | |

DTM Date/time/period
Function: A segment specifying date/time/period details relating to the line item only.
Classification: Dependent (D4).
Comments:

- Hours from/to (Processing date/period) is used in the Elspot market (S)
- Max. duration, min. duration and Activation time is used in the Regulation market (R) and Peak Load Capacity Market (L).
- Min. duration may also be used in the Frequency Regulation Capacity Market (F) and Frequency Regulation Reserves, FRR-A (A)
- Resting time is only used in Regulation market (R) and Peak Load Capacity Market (L).
- Time zone is defined in DTM in SG 0. See [3] «Functional description», for a description on the use of the format qualifier.

Example: DTM+324:199906031200199906031300:Z13'

Time period, Max. duration, Resting time and Activation time

| Ref. | Name | Cl. | Form. | Description |
|------|-----------------------------------|-----|--------|--|
| C507 | DATE/TIME/PERIOD | M | | |
| 2005 | Date/time/period qualifier | M | an..3 | Code: 44 Availability (Max. duration) (R, L) 48 Duration (Min. duration) (R, L, F) 66 Excluded period (Resting time) (R, L) 163 Activation time (R, L) (Only in Sweden) 324 Processing date/period (S, T) |
| 2380 | Date/time/period | R | an..35 | Date/time/period |
| 2379 | Date/time/period format qualifier | R | an..3 | Code: 203 CCYYMMDDHHmm, (324) 805 Hour (a quantity of hours), (44) 806 Minute (a quantity of minutes), (163) Z13 CCYYMMDDHHmm-CCYYMMDDHHmm (Without hyphen), (324) |

MESSAGE: QUOTES

SG 31

Function: A group of segments identifying the price and quantity information in all markets, and time period for Regulation market (R) and Peak Load Capacity Market (L).

Classification: Required (R99).

Comments:

- At least one repetition is required.
- Maximum 16 repetitions in the Elspot market (S)

Segments: PRI, RNG, DTM

PRI Price details

Function: A segment to specify the price type and unit price.

Classification: Mandatory (M1).

Comments:

- Data element C509 5118 is to be used together with the code «CAL» in data element C509 5125.
- Data element C509 5375 is to be used together with the code «INF» in data element C509 5125.

Example: PRI+CAL:90'
PRI+INF::CT'

Price
Elspot price

>
>

| Ref. | Name | Cl. | Form. | Description |
|--------------|--------------------------------------|--------|-------|---|
| C509 5125 | PRICE INFORMATION Price qualifier | R M | an..3 | Code: CAL Calculation price INF Information |
| 5118 | Price | D | n..15 | Price (Together with «CAL») |
| 5375 | Price type, coded | D | an..3 | Code: CT Contract (Elspot price, used together with «INF») |
| 5387 | Price type qualifier | X | an..3 | |
| 5284 | Unit price basis | X | n..9 | |
| 6411 | Measure unit qualifier | X | an..3 | |
| 5213 | SUB-LINE PRICE CHANGE, CODED | X | an..3 | |

RNG Range details
 Function: A segment to identify the quantity to which the price information applies.
 Classification: Required (R1).
 Comments:
 Example: RNG+4+MAW:60'

| Ref. | Name | Cl. | Form. | Description |
|--------------|---------------------------------|--------|-------|---|
| 6167 | RANGE TYPE QUALIFIER | M | an..3 | Code: 4 Quantity range |
| C280 6411 | RANGE Measure unit qualifier | R M | an..3 | Code: MAW MW (Megawatt) MWH MWh (Megawatt-hour) Z01 MWh/h Z05 MW/Hz |
| 6162 | Range minimum | R | n..18 | Quantity |
| 6152 | Range maximum | X | n..18 | |

Quantity >

DTM Date/time/period
 Function: A segment indicating the date/time/period details relating to the quantity and price details in the PRI and RNG segments. This segment may indicate date/time ranges, e. g. start and end dates for a delivery pattern, or delivery window.
 Classification: Dependent (D1).
 Comments:

- Used in Regulation market (R), Peak Load Capacity Market (L), Frequency Regulation Capacity Market (F), Frequency Regulation Reserves (FRR-A) (A) and for Profile block bids (Trade/Elspot (S)).
- Time zone is defined in DTM in SG 0. See [3] «Functional description» for a description on the use of the format qualifier.

 Example: DTM+324:20127050801002012705090000:Z13'

| Ref. | Name | Cl. | Form. | Description |
|------|-----------------------------------|-----|--------|--|
| C507 | DATE/TIME/PERIOD | M | | |
| 2005 | Date/time/period qualifier | M | an..3 | Code: 324 Processing date/period |
| 2380 | Date/time/period | R | an..35 | Date/time/period |
| 2379 | Date/time/period format qualifier | R | an..3 | Code: 203 CCYYMMDDHHmm Z13 CCYYMMDDHHmm- CCYYMMDDHHmm (Without hyphen) |

Time period >

☐

MESSAGE: QUOTES

SG 32

Function: A group of segments giving references to the line item.
 Classification: Dependent (D3).
 Comments: The reference shall be used for block bids in the Elspot market (S). For other markets the use must be specified bilaterally.
 Segments: RFF

RFF Reference
 Function: A segment identifying the reference.
 Classification: Mandatory (M1).
 Comments:

- The code ACD is used for Block bids in the Elspot market and is required. For other markets the use must be specified bilaterally.
- The code ACE is used for referencing a previous “Price quote number” when linking a new Block bid to a previous Block bid.
- The code AHU is used for referencing a Product Ticker in the Frequency activated reserve market.

 Example: RFF+PR:AB1996431’

Quotation
reference no/
Block no.

| Ref. | Name | Cl. | Form. | Description |
|--------------|----------------------------------|--------|--------|---|
| C506 1153 | REFERENCE Reference qualifier | M M | an..3 | Code: ACD Additional reference number (Block id) ACE Related document number (Reference to related price quote number). PR Price quote number Reference number assigned by the player to a Quotation. AHU Request for quote number |
| 1154 | Reference number | R | an..35 | Reference no. |
| 1156 | Line number | X | an..6 | |
| 4000 | Reference version number | X | an..35 | |

| | | MESSAGE: QUOTES | | SG 33 | | |
|---|---|------------------------|--|--------------|--------------|---|
| | | Function: | A group of segments identifying a Bidding location id, a Net area or Serial id. | | | |
| | | Classification: | Dependent (D1). | | | |
| | | Comments: | Only to be used in the Regulation market (R) and Peak Load Capacity Market (L). | | | |
| | | Segments: | LOC | | | |
| | | LOC | Place/location identification. | | | |
| | | Function: | A segment identifying a Bidding location id or Serial id, and optional a Net area. | | | |
| | | Classification: | Mandatory (M1). | | | |
| | | Comments: | Data element 3055 in composite element C519 must be used if Net area is used. | | | |
| | | Example: | LOC+48+BZ3452::SM' | | | |
| | | Ref. | Name | Cl. | Form. | Description |
| | | 3227 | PLACE/LOCATION QUALIFIER | M | an..3 | Code: 48 Region of Production (Bidding Location Id.) 90 Place/location (Serial Id.) |
| Bidding Location Id or Serial Id. | > | C517 | LOCATION IDENTIFICATION | R | | |
| | | 3225 | Place/location identification | R | an..25 | Bidding Location Id. or Serial Id. |
| | | 1131 | Code list qualifier | X | an..3 | |
| | | 3055 | Code list responsible agency, coded | R | an..3 | Code: SM Nord Pool ASA SVK Svenska Kraftnät SLY Finnish Electricity Association 9 GS1 |
| | | 3224 | Place/location | X | an..70 | |
| Net area | > | C519 | RELATED LOCATION ONE IDENTIFICATION | O | | |
| | | 3223 | Related place/location one identification | O | an..25 | Net area |
| | | 1131 | Code list qualifier | X | an..3 | |
| | | 3055 | Code list responsible agency, coded | D | an..3 | Code: SM Nord Pool ASA SVK Svenska Kraftnät SLY Finnish Electricity Association 9 GS1 |
| Description of area connected to split busbar | > | 3222 | Related place/location one | O | an..70 | Description of area connected to split busbar connection |
| | | C553 | RELATED LOCATION TWO IDENTIFICATION | X | | |
| | | 3233 | Related place/location two identification | X | an..25 | |
| | | 1131 | Code list qualifier | X | an..3 | |
| | | 3055 | Code list responsible agency, coded | X | an..3 | |
| | | 3232 | Related place/location two | X | an..70 | |
| | | 5479 | RELATION, CODED | X | an..3 | |

| □ | | MESSAGE: QUOTES | SG 0 | | | | | | | | | | | | | | | | | | | | | | | | | |
|---|------------------------|------------------------|-------------|---|------|-----|-------|-------------|------|------------------------|---|----|---|------|-------------------|---|-------|---|------|---------------|---|-------|------------------------------------|------|------------------------|---|-------|--|
| Function: | Summary section | | | | | | | | | | | | | | | | | | | | | | | | | | | |
| Classification: | Mandatory (M1). | | | | | | | | | | | | | | | | | | | | | | | | | | | |
| Comments: | | | | | | | | | | | | | | | | | | | | | | | | | | | | |
| Segments: | UNS, CNT, UNT | | | | | | | | | | | | | | | | | | | | | | | | | | | |
| <p>UNS Section control</p> <p>Function: A service segment placed at the start of the summary section to avoid segment collision.</p> <p>Classification: Mandatory (M1).</p> <p>Comments: </p> <p>Example: UNS+S'</p> | | | | | | | | | | | | | | | | | | | | | | | | | | | | |
| <table border="1" style="width: 100%; border-collapse: collapse;"> <thead> <tr> <th style="width: 10%;">Ref.</th> <th style="width: 40%;">Name</th> <th style="width: 5%;">Cl.</th> <th style="width: 10%;">Form.</th> <th style="width: 35%;">Description</th> </tr> </thead> <tbody> <tr> <td>0081</td> <td>SECTION IDENTIFICATION</td> <td>M</td> <td>a1</td> <td>Code: S Separates the detail and summary sections</td> </tr> </tbody> </table> | | | | Ref. | Name | Cl. | Form. | Description | 0081 | SECTION IDENTIFICATION | M | a1 | Code: S Separates the detail and summary sections | | | | | | | | | | | | | | | |
| Ref. | Name | Cl. | Form. | Description | | | | | | | | | | | | | | | | | | | | | | | | |
| 0081 | SECTION IDENTIFICATION | M | a1 | Code: S Separates the detail and summary sections | | | | | | | | | | | | | | | | | | | | | | | | |
| <p>CNT Control total</p> <p>Function: A segment by which control totals may be provided by sender for checking by the receiver.</p> <p>Classification: Required (R2).</p> <p>Comments: </p> <ul style="list-style-type: none"> • A net sum for the quantity in the RNG segment in SG 31 shall be sent. Positive quantities are added while negative quantities are subtracted. • If bilaterally agreed, it may also be sent a net sum for the prices in the PRI segment in SG 31. <p>Example: CNT+1:224'</p> | | | | | | | | | | | | | | | | | | | | | | | | | | | | |
| <table border="1" style="width: 100%; border-collapse: collapse;"> <thead> <tr> <th style="width: 10%;">Ref.</th> <th style="width: 40%;">Name</th> <th style="width: 5%;">Cl.</th> <th style="width: 10%;">Form.</th> <th style="width: 35%;">Description</th> </tr> </thead> <tbody> <tr> <td>C270</td> <td>CONTROL</td> <td>M</td> <td></td> <td></td> </tr> <tr> <td>6069</td> <td>Control qualifier</td> <td>M</td> <td>an..3</td> <td>Code: 1 Algebraic total of the quantity values (in the RNG segment) ZZZ Algebraic total of the prices (in the PRI segment)</td> </tr> <tr> <td>6066</td> <td>Control value</td> <td>M</td> <td>n..18</td> <td>Net sum for the quantity or prices</td> </tr> <tr> <td>6411</td> <td>Measure unit qualifier</td> <td>X</td> <td>an..3</td> <td></td> </tr> </tbody> </table> | | | | Ref. | Name | Cl. | Form. | Description | C270 | CONTROL | M | | | 6069 | Control qualifier | M | an..3 | Code: 1 Algebraic total of the quantity values (in the RNG segment) ZZZ Algebraic total of the prices (in the PRI segment) | 6066 | Control value | M | n..18 | Net sum for the quantity or prices | 6411 | Measure unit qualifier | X | an..3 | |
| Ref. | Name | Cl. | Form. | Description | | | | | | | | | | | | | | | | | | | | | | | | |
| C270 | CONTROL | M | | | | | | | | | | | | | | | | | | | | | | | | | | |
| 6069 | Control qualifier | M | an..3 | Code: 1 Algebraic total of the quantity values (in the RNG segment) ZZZ Algebraic total of the prices (in the PRI segment) | | | | | | | | | | | | | | | | | | | | | | | | |
| 6066 | Control value | M | n..18 | Net sum for the quantity or prices | | | | | | | | | | | | | | | | | | | | | | | | |
| 6411 | Measure unit qualifier | X | an..3 | | | | | | | | | | | | | | | | | | | | | | | | | |
| Control total | > | | | | | | | | | | | | | | | | | | | | | | | | | | | |

UNT Message trailer
Function: A service segment ending a message, giving the total number of segments in the message and the control reference number of the message.
Classification: Mandatory (M1).
Comments:
Example: UNT+34+1'

| Ref. | Name | Cl. | Form. | Description |
|------|-----------------------------------|-----|--------|---|
| 0074 | NUMBER OF SEGMENTS IN THE MESSAGE | M | n..6 | Number of segments in the message, including UNH and UNT. |
| 0062 | MESSAGE REFERENCE NUMBER | M | an..14 | Control reference number. Equal to 0062 in UNH |

APPENDIX A - EXAMPLE OF AN EDIFACT MESSAGE (HOURLY BID)

```
UNA:+.? '
UNB+UNOB:2+102965662952:82+102123456789:82:SANMELD+990407:1121+1999102'
UNH+1+QUOTES:D:96A:UN:EDIEL2+S'
BGM+310+ABC111605+9+AB'
DTM+137:199904071021:203'
DTM+163:199904072300:203'
DTM+164:199904082300:203'
DTM+ZZZ:1:805'
CUX+2:NOK'
NAD+FR+123456789:NO3:82++++Lysaker+++NO'
LOC+105+NO1::SM'
CTA+MS+:Terje Nilsen'
NAD+DO+965662952:NO3:82++++++NO'
LIN+1++1420:::SM'
DTM+324:199904072300199904080000:Z13'
PRI+CAL:0'
RNG+4+Z01:-130.0'
PRI+CAL:109'
RNG+4+Z01:-130.0'
PRI+CAL:110'
RNG+4+Z01:-165.0'
PRI+CAL:2000'
RNG+4+Z01:-165.0'
LIN+2++1420:::SM'
DTM+324:199904080000199904080100:Z13'
PRI+CAL:0'
RNG+4+Z01:-136.0'
PRI+CAL:109'
RNG+4+Z01:-136.0'
PRI+CAL:110'
RNG+4+Z01:-171.0'
PRI+CAL:2000'
RNG+4+Z01:-171.0'
LIN+3++1420:::SM'
DTM+324:199904080100199904080200:Z13'
PRI+CAL:0'
RNG+4+Z01:-142.0'
PRI+CAL:109'
RNG+4+Z01:-142.0'
...
LIN+24++1420:::SM'
DTM+324:199904082200199904082300:Z13'
PRI+CAL:0'
RNG+4+Z01:-117.0'
PRI+CAL:109'
RNG+4+Z01:-117.0'
PRI+CAL:110'
RNG+4+Z01:-152.0'
PRI+CAL:2000'
RNG+4+Z01:-152.0'
UNS+S'
CNT+1:-16624.0'
CNT+ZZZ:53256'
UNT+255+1'
UNZ+1+1999102'
```


APPENDIX B - EXAMPLE OF AN EDIFACT MESSAGE (BLOCK BID)

Nord Pools Block Bid is an aggregated bid for several consecutive hours with a fixed bidding price and volume. The block bid price is compared with the average hourly price within the block period. A block bid must be accepted in its entirety; if accepted the contract covers all hours and the volume specified in the bid.

```
UNA:+.? '
UNB+UNOB:2+102965662952:82+102123456789:82:SANMELD+990131:1105+1999103'
UNH+1+QUOTES:D:96A:UN:EDIEL2+S'
BGM+310+EDIS000756+9+AB'
DTM+137:199901311105:203'
DTM+163:199902010000:203'
DTM+164:199902020000:203'
DTM+ZZZ:1:805'
CUX+2:NOK'
NAD+FR+123456789:NO3:82++++Lysaker+++NO'
LOC+105+NO1::SM'
CTA+MS+:Tor ]ge Halvorsen'
NAD+DO+965662952:NO3:82++++++NO'
LIN+1+39+1600::SM'
DTM+324:199902010000199902010700:Z13'
PRI+CAL:100'
RNG+4+Z01:50'
RFF+PR:REFBLOKK1-1'
RFF+ACD:B0107'
LIN+2+39+1600::SM'
DTM+324:199902010000199902010700:Z13'
PRI+CAL:110'
RNG+4+Z01:55'
RFF+PR:REFBLOKK1-2'
RFF+ACE:REFBLOKK1-1'
RFF+ACD:B0107'
LIN+3+39+1600::SM'
DTM+324:199902010700199902011800:Z13'
PRI+CAL:100'
RNG+4+Z01:80'
RFF+PR:REFBLOKK2-1'
RFF+ACD:B0818'
LIN+5+39+1600::SM'
DTM+324:199902011800199902020000:Z13'
PRI+CAL:90'
RNG+4+Z01:-30.0'
RFF+PR:REFBLOKK3-2'
RFF+ACD:B1924'
UNS+S'
CNT+1:115'
CNT+ZZZ:480'
UNT+37+1'
UNZ+1+1999103'
```

APPENDIX C - EXAMPLE OF AN EDIFACT MESSAGE (PROFILE BLOCK BID)

```
UNA:+.? '
UNB+UNOB:2+102123456789:82+102965662952:82:SPOTMARKED+060207:1014+FF5F1
'
UNH+CX411+QUOTES:D:96A:UN:EDIEL2+S'
BGM+310+ZQAXYOP26T20060207101413000019C0+9+AB'
DTM+137:200602071014:203'
DTM+163:200602080000:203'
DTM+164:200602081600:203'
DTM+ZZZ:1:805'
CUX+2:NOK'
NAD+FR+123456789:NO3:82+++Oslo+++NO'
LOC+105+NO1::SM'
CTA+MS+:Ola Nordmann'
NAD+DO+965662952:NO3:82'
LIN+1+39+1600:::SM'
DTM+324:200602080000200602080800:Z13'
PRI+CAL:110'
RNG+4+Z01:-44.1'
RFF+PR:REF-PROFILE-BLOCK-00001'
RFF+ACD:PB0116'
LIN+2+39+1600:::SM'
DTM+324:200602080800200602081200:Z13'
PRI+CAL:110'
RNG+4+Z01:-32.8'
RFF+PR:REF-PROFILE-BLOCK-00001'
RFF+ACD:PB0116'
LIN+3+39+1600:::SM'
DTM+324:200602081200200602081600:Z13'
PRI+CAL:110'
RNG+4+Z01:-20.3'
RFF+PR:REF-PROFILE-BLOCK-00001'
RFF+ACD:PB0116'
UNS+S'
CNT+1:-97.2'
CNT+ZZZ:330'
UNT+33+CX411'
UNZ+1+FF5F1'
```

APPENDIX D - EXAMPLE OF AN EDIFACT MESSAGE (FLEXI BLOCK BID)

```
UNA:+.? '
UNB+UNOB:2+102123456789:82+102965662952:82:SPOTMARKED+060207:1014+FF5F'
UNH+CX41+QUOTES:D:96A:UN:EDIEL2+S'
BGM+310+AXYOP26T20060207101413000019C0+9+AB'
DTM+137:200602071014:203'
DTM+163:200602080000:203'
DTM+164:200602090000:203'
DTM+ZZZ:1:805'
CUX+2:NOK'
NAD+FR+123456789:NO3:82++++Oslo+++NO'
LOC+105+NO1::SM'
CTA+MS+:Ola Nordmann'
NAD+DO+965662952:NO3:82'
LIN+1+39+1600:::SM'
DTM+324:200602080000200602090000:Z13'
PRI+CAL:230'
RNG+4+Z01:52.1'
RFF+PR:REF-FLEXI-BLOCK-00001'
RFF+ACD:F0124'
LIN+2+39+1600:::SM'
DTM+324:200602080000200602090000:Z13'
PRI+CAL:280'
RNG+4+Z01:32.8'
RFF+PR:REF-FLEXI-BLOCK-00002'
RFF+ACD:F0124'
UNS+S'
CNT+1:84.9'
CNT+ZZZ:510'
UNT+27+CX41'
UNZ+1+FF5F'
```


APPENDIX D - EXAMPLE OF AN EDIFACT MESSAGE (NORWEGIAN BALANCE REGULATION MARKET BID)

```
UNA:+.? `
UNB+UNOC:3+708000123456:14+7080000923168:14:REGULERMARKED+120101:1533+2
0120100165781++++1'
UNH+1+QUOTES:D:96A:UN:EDIEL2+S'
BGM+310+2012010100059544+9+AB'
DTM+137:201201011533:203'
DTM+163:201201020000:203'
DTM+164:201201030000:203'
DTM+ZZZ:1:805'
CUX+2:NOK'
NAD+FR+7080001234567::9++++++NO'
NAD+DO+7080000923168::9++++++NO'
LIN+1++1608:::SM'
LOC+90+NOKG99999::SM'
PRI+CAL:140'
RNG+4+Z01:-11'
DTM+324:201201020000201201020100:Z13'
PRI+CAL:140'
RNG+4+Z01:-11'
DTM+324:201201020100201201020200:Z13'
PRI+CAL:140'
RNG+4+Z01:-11'
DTM+324:201201020200201201020300:Z13'
...
PRI+CAL:290'
RNG+4+Z01:100'
DTM+324:201201022300201201030000:Z13'
RFF+PR:2012011-3-2'
UNS+S'
CNT+1:2118'
CNT+ZZZ:10320'
UNT+163+1'
UNZ+1+20120100165781'
```