

Minutes: NMEG meeting Date: Wednesday May 6 th , 2020 Time: 10:00 –12:00 Place: GoToMeeting	 NMEG Nordic Market Expert Group
May 28 th , 2020	

Present: Christian, Energinet
Jan, Energinet
Jan, Svenska kraftnät
Jari, Fingrid
Jon-Egil, Statnett (Convenor)
Ove, Edisys (Secretary)
Tage, Energinet
Teemu, Fingrid
Mika, eSett, FI

To (NMEG): Anne Stine, Elhub
Christian, Energinet
Jan, Energinet
Jan, Svenska kraftnät
Jari, Fingrid
Jon-Egil, Statnett (Convenor)
Ole, Energinet
Ove, Edisys (Secretary)
Tage, Energinet
Teemu, Fingrid

CC: Audun, Elhub
Fedder, Energinet
Hans Erik, Elhub
Minna, Fingrid

To (Invited guests): Mika, eSett, FI
Tommy, eSett, FI
Tuomas L, eSett, FI
Tuomas P, eSett, FI

Appendix A: Result from NMEG CIM-XML Subgroup
Appendix B: Localising ABIEs (Nordic/national ABIEs)
Appendix C: Overview of Nordic memberships in international standardisation bodies
Appendix D: Overview of the usage of xml-schemas in the Nordic countries
Attachment: None

1 Approval of agenda

The agenda was approved with the following additions:

- BRS for Operate, see item 6.2;
- Information from eSett to TSOs regarding flow on DC lines from NEMOs, see item 14.1 under AOB.

2 Approval of previous meeting minutes

The minutes from previous meeting were approved.

3 Status from NMEG "ECP/EDX Centre of Excellence" subgroup

Background: *From the NMEG Roadmap:* During 2020, NMEG intend to make a framework for governance of EDX/ECP (MADES) for the Nordic countries. eSett is moving towards ECP and introduces ECP as a new communication channel during Q1 2020.

NMEG has set up the "ECP/EDX Centre of Excellence" subgroup, which among others will handle the task mentioned above.

References (links): NMEG Roadmap

What to decide,

discuss or inform: Status from NMEG "ECP/EDX Centre of Excellence" subgroup.

The first meeting is scheduled for Wednesday next week.

Jari informed that NIT want the ECP/EDX Centre of Excellence subgroup to report directly to NIT and not to NMEG. However, we will still have a status report on the NMEG agenda.

NIT has also asked for an official Termes of Reference for the group.

Jon-Egil informed that Statnett think it is OK using the internet node for NOIS ECP communication (this is a secure channel), which was supported from Denmark. The topic will first be discussed in the NOIS group, before moved to the ECP/EDX Centre of Excellence subgroup. If any objections or comments, please inform Jon-Egil!

4 NMEG-NORCAP Project

Background: NORCAP is a project run by Nordic RSC that needs a set of new CIM based documents, such as the CRAC document and the SIPS document.

References (links): None.

What to decide,

discuss or inform: Update of the NorCap BRS.

Continued action:

- Jon-Egil will inform Ove of which documents that will contain the new resolution (P1D);
- Thereafter Ove will update the BRS and upload it to eRoom.

5 Status for a common meeting with NEAT

Background: NIT has taking over from MSC as "home" for NMEG and consequently we should have a common meeting with NEAT (Nordic Enterprise Architecture Team), e.g. half day (same time and place) to see how we can cooperate.

References (links): None.

What to decide,

discuss or inform: Status for a common meeting with NEAT

Ongoing task:

- Jon-Egil will check if it still is any interest for a common meeting with NEAT and if so, schedule a common meeting.

6 Status and update of Nordic BRSs and other documents if needed

Background: NMEG is responsible for a set of BRSs that are published at www.ediel.org.

References (links): None.

What to decide,

discuss or inform: Update of BRSs and other documents if needed.

Ove had as action from previous meeting added the missing code **E15** in NBS BRS for Master Data and send it to NMEG for 14 days of commenting (until Friday May 8th). Thereafter, unless blocking comments, the BRS will be published.

The related xml schemas have already been published.

6.1 ENTSO-E/Nordic codes for the codes used in QUOTES

Shall we make a MR for a new Process type for the "D" in QUOTES, i.e. bids for Disturbance reserve ("störningsreserven")?

Continued action:

- Jan (SE) will find a **good** definition of "störningsreserven" (Disturbance reserve).

6.2 BRS for Operate

Jan (SE) informs that Sweden will introduce CIM for the Activation Document in a pilot project with a few participants soon. When documenting the pilot project, Jan (SE) found a few items to update in the published BRS for Operate:

- a) Process Type "**A30** Tertiary reserve process i.e. Balance regulation market" should be replaced with "**A47** Manual frequency restoration reserve".
 - a. Fifty will keep **A30** until a new BRS is published and probably change after the pilot period, if a new BRS is then published, with the code **A47**. Unless we keep the code **A30**.

Conclusion:

- o We add **A47** and **A51** to the BRS.
- b) Fifty uses Business Type **A10** instead of "**A97** Manual frequency restoration reserve", but this is an internal Fifty problem.
 - a. Jan (SE) is looking at whether they can switch to the code **A97** already in their pilot project, or if they will wait until new BRS is published, or wait until after the pilot project.

Conclusion:

- o Already in the BRS, hence no change.
- c) Reason, we should only use the connection to "Point", but it does not say anything about it in the published BRS. (In addition, we will start now using Reason tied to TimeSeries when we send activations from Swedish power grids – it depends on other things.)

- a. Reason will be used in Sweden at time series level as long as we still send QUOTES.

Conclusion:

- “Interval” changed to “Point” in the BRS.
- d) And what does a forthcoming "Nordic Operate BRS" say? Maybe it won't be ready until IEC 62325-451-7 is a ready-made standard (2022?) or when we upgrade in Fifty...

Conclusion:

- No change, at least not for the time being.
- e) And does ENTSO-E say anything about which codes to use? Their implementation guides may not be so detailed at the code level. (Right now, I can't check – ENTSO-E's website, we'll still stay away.)

Conclusion:

- Jan (SE) thinks that Fifty uses the code **A11** (Unavailable – (The volumes (one or more) are unavailable)), which is not a part of the BRS.

Before or when we have our meeting on May 6th, we should make a comparison between what Fifty actually sends and what is in (draft) BRS.

Ove noted that in the latest BRS (not yet published), the ECAN Publication Document is replaced with the CIM document Balancing Market Document. However, it seems that none is using the ECAN Publication Document, hence the document will be left out.

The updated BRS can be downloaded for Statnett eRoom.

Action:

- Jon-Egil is asked to find what codes Fifty is using in marketObjectStatus.status and especially if **A11** should be added to the BRS;
- If the updated BRS are to be published will be decided at next meeting.

7 Status for MRs to ENTSO-E

Background: NMEG has sent several Maintenance Requests (MR) to ENTSO-E during the last years and some of these (about 10 MRs) has been postponed by WG-EDI.

References (links): The MRs can be downloaded from Statnett's eRoom.

What to decide,

discuss or inform: Status for the MRs sent to WG-EDI.

Ove had as action from previous meeting replaced “**Z05** Bilateral Trade” with “**A59** Internal trade reporting” in the non-published NBS BRSs, NBS BRS for TSO-MO and BRS for Trade (without publication).

Continued action:

- DK, FI and SE will go through the list of Reason Codes below (see chapter 5.3.4 in NBS BRS for TSO-MO) and verify if the codes are used and needed. The BRS can be downloaded from [Statnett eRoom](#).

Z22 Supportive power

Z26 Transit triangle

Z27 Transit redispatch

Z28 Transit SB Loop Long

- Z31** FRR-M, Balancing Power (Frequency Restoration Reserve - Manual activated reserves (FRR-M), Balancing Power)
- Z34** FRR-M, Quarter regulation (Frequency Restoration Reserve - Manual activated reserves (FRR-M), Quarter regulation when TSO need transfer of production (usually start 15 min earlier))
- Z35** FRR-M, Special Regulation (Frequency Restoration Reserve - Manual activated reserves (FRR-M), Special Regulation where regulation does not affect the regulation price)
- Z36** Hour Change Regulation (to reduce problems encountered at the turn of the hour in the Nordic countries or in Finland, Fingrid reserves the right to transfer the planned changes to begin 15 minutes before or after the planned moment)
- Z37** Power Transaction (Fixed price transaction used for specific purposes outside of ordinary regulation)
- Z38** TSO Internal Countertrades (The time series concern TSO Internal Countertrades)
- Z39** Day Ahead Production Adjustment (Energy (production) moved from one hour to another to avoid major changes between hours)
- Z42** FCR-N, D-1
- Z43** FCR-N, D-2
- Z44** FCR-N, D-1, correction
- Z45** FCR-N, D-2, correction
- Z46** FCR-D, D-1
- Z47** FCR-D, D-2
- Z48** FCR-D, D-1 correction
- Z49** FCR-D, D-2 correction

8 BRS for schedules

- Background:** The latest version of the BRS for Schedules was published in February 2014. Since then the scheduling processes has changed and NMEG is working on updating the document.
- References (links):** The draft BRS can be downloaded from [NMEG working documents](#).
- Action(s):** The following actions will be reopened when we start a project together with NBM (Nordic Balancing Model):
- 1) Jan (SE) and Fedder will check the dependency matrix for ESS schedule document and ESS confirmation report, chapter 7.1 and 7.3.
 - 2) Fedder, Jan (SE) and Jari will verify if “**A09** Finalised” is (will be) used for the ERRP Planned Resource Schedule Document from BRP to SO, or if it is only “**A14** Resource Provider Resource Schedule (Operational schedule)” that will be used (as in Norway), ref. chapter 7.4 in the Schedule BRS; *SvK and Fingrid will be using **A14**. Energinet is pending.*
 - 3) Everyone should verify and possibly update the “Used in” column in chapter 7.4.3;
 - 4) Jari will find Finnish usages of Business types in chapter 7.4.4;
 - 5) Everyone should verify and possibly update the “dependency matrix” in chapter 7.4.5.
- What to decide, discuss or inform:** Review of updated BRS.

Continued action:

- Ove will prepare CIM versions of the documents in the Scheduling BRS.
- Ove will add the CIM version of the ERRP Planned Resource Schedule for FFR services to the BRS for Schedules.

9 XML schemas (to remember item)

Background: The NMEG set of schemas, including extended table with TSO columns, are shown in Appendix D.

References (links):

Action(s): When we start a project together with NBM (Nordic Balancing Model), everyone are asked to find what versions of xml-schemas are used to day in different projects and come up with proposals for new schemas and/or sets of schemas that should be published at www.ediel.org.

What to decide,

discuss or inform: Verify the list of proposals for new schemas and/or sets of schemas, from the NMEG participants, that should be published at www.ediel.org.

10 NMEG CIM-XML Subgroup

Background: At the NMEG meeting November 2019, it was agreed to establish a NMEG CIM-XML Subgroup that will make Nordic CIM based XML documents. The following tasks are prioritised (updated at NMEG meeting March 2020):

- a) Update the NMEG model with the latest ebIX® extension;
- b) Make a road map for making CIM documents for the Danish Datahub version 3.0;
- c) Continue with NBS documents:
 1. NBS ebIX® based documents;
 2. NBS documents based on older ENTSO-E schemas;
 3. NBS master data documents.

The members of NMEG CIM-XML Subgroup are Jan (DK), Jan (SE), Teemu and Ove.

References (links):

What to decide,

discuss or inform: Status.

10.1 Report from NMEG CIM-XML Subgroup; GoToMeeting April 17th

- Participants Christian, Jan (DK), Jan (SE) and Ove.
- The mapping of the Danish BRS 022 to CIM continued but was not finalised. Will be continued at the next meeting.

Action:

- Christian will compare the Aggregated Metered Production Document and Validated Data for Settlement for Aggregator with Measure documents specified in Denmark.

- Ove will make a mapping table between the Danish attributes and CIM.

10.2 Report from NMEG CIM-XML Subgroup; GoToMeeting April 21st

- Participants Christian, Jan (DK), Jan (SE) and Ove.
- Ove had as action from previous meeting made a mapping table between the Danish attributes and CIM.
- The mapping of the Danish BRS 022 to CIM continued.

Actions:

- Christian will compare the Aggregated Metered Production Document and Validated Data for Settlement for Aggregator with Measure documents specified in Denmark.
Status 20200427:
 - Christian had made an Excel document that compared the Danish DataHub with eSett documents, which will be used as a starting point for a mapping for measure data.
- Jan (SE) will see if there are any possibilities to link a Supply Start Date with the Energy Supplier.
Status 20200427:
 - Continued action.
- Jan (SE) and Jan (DK) will investigate options for how to include Production Obligation.
Status 20200427:
 - Will be added to a Danish ACC package.
- Christian and Jan (DK) will investigate if the attribute “MP Connection type” originally was based on an attribute from the ebIX® model or if this is something invented in Denmark.
Status 20200427:
 - The attribute origin from Datahub version 2.
 - Will be added to a Danish ACC package.
- Ove will try finding a CIM element for “Net Settlement Group” – to be discussed at next meeting.
Status 20200427:
 - Ove had looked for a CIM element for “Net Settlement Group” and the best suggestion seems to be using the attribute “type:CapacityContractKind_String” in the MarketAgreement class, which is associated to the TimeSeries class, with the definition “The specification of the kind of the agreement, e.g. long term, daily contract”. However, not a brilliant solution.
Conclusion:
 - To be added to the Danish ACC package.
- Ove will make the CIM model available on Dropbox so Jan (DK) and Jan (SE) can download it.
Status 20200427:
 - Done.
- Ove will add Energy Supplier, BRP and Energy Label to the CIM version of the Danish BRS 022.
Status 20200427:
 - Done

10.3 Report from NMEG CIM-XML Subgroup; GoToMeeting April 27st

- Participants Christian, Jan (DK), Jan (SE), Ove and Teemu.
- It was decided to make a “Danish ACCs” package in CIM for special Danish attributes. Such as MP Connection type, Production Obligation and Net Settlement Group.
- The mapping of the Danish BRS 022 to CIM continued.

Actions:

- Ove will create a Danish ACC package.
- Ove will add the measure documents described in the Excel sheet from Christian to the Danish mapping document.

10.4 Report from NMEG CIM-XML Subgroup; GoToMeeting May 5th

- Participants Christian, Jan (DK), Jan (SE), Ove and Teemu.
- It was a discussion if we should map to the Contextual CIM Model or the Assembly CIM Model in the “Memo - Mapping of Danish downstream documents to CIM”.

Conclusion:

- We map to the use the Contextual model.
- Jan had come up with the several proposals for how to link a Supply Start Date with the Energy Supplier. However, the discussion ended by adding an association from the CIM class Ext_MktActivityRecord to the CIM class Ext_DateAndOrTime, named SupplyStart_DateAndOrTime.
- Ove had added packages with Danish specialities to the CIM model, i.e.
 - Model / DK_Extension 20200429,
 - Model / ProfilesIEC62325 / EuropeanStyleMarketProfile / IEC62325-351 Ed.3 / DK ACCs 20200427

However, it is currently not possible to associate the DK_Ext_MarketEvaluationPoint class with the Ext_MktActivityRecord. Jan and Ove will investigate.

Actions:

- Jan and Ove will investigate how to associate the DK_Ext_MarketEvaluationPoint class with the Ext_MktActivityRecord, starting with checking that the associations are OK in the package DK ACCs 20200427
- Ove will make xml-schemas for the master data document to see how CIMSyntaxGen handles «Compounds»

11 Picture at the front page of www.ediel.org

Background: At the NMEG meeting March 2020, it was agreed to add a picture to the front page of www.ediel.org.

References (links): www.ediel.org.

What to decide, discuss or inform: Status.

Continued actions:

- Jon-Egil volunteered finding proposals for a picture;
- When a picture is agreed, Teemu will add it to www.ediel.org.

12 Information (if any)

None.

13 Next meetings

Unless otherwise explicitly stated, the meetings start at 09:00 (CET) the first day and end 16:00 (CET) the second day.

NMEG meetings:

- Wednesday June 3rd, 13:00 – 14:30 and Thursday June 4th, 09:30 – 11:30, GoToMeeting;
- Tuesday and Wednesday August 18th and 19th in Edisys offices in Oslo;
- Tuesday and Wednesday October 27th and 28th in Svenska kraftnät's offices in Sundbyberg:
 - Incl. common ½ day meeting with eSett SLA group on Wednesday 28th.

NMEG CIM-XML subgroup GoToMeetings:

- Every Wednesday until June 17th, 10:00 – 11:30.

14 AOB

14.1 Information from eSett to TSOs regarding flow on DC lines from NEMOs

From Jan (SE):

Below is a suggestion for what we need as input from eSett to Svenska kraftnät. See also item 14.3 from previous minutes.

The suggestion is compared with what eSett receives as input regarding the NEMOs, see the Excel file. What is suggested is marked with dark green in the header (See column I for the header, and column N and P for the time series).

In the Word-file, and the xml-file, you find an example with data for three NEMOs per one and the same cable.

(From eSett we will then want to get one file per connection for intraday, one file per connection for day ahead, and each file including two timeseries per NEMO. A total of six timeseries per file if there are three NEMOs).

To be noted:

- a) We suggest using the same document type for what eSett send further to us, as the document type that eSett has received.
- b) eSett will receive four timeseries per interconnection (Business Types **B67** and **B68** in both directions). We will only get two timeseries, one per each direction from eSett. Therefore, using the same business types looks wrong. Rather than we can have one and the business type with just opposite direction specified as In- and Out-area. In the

example the suggestion is to use Business Type **A06** (External trade without explicit capacity), but other codes could be used – or created locally.

- c) Object Aggregation is “Area” in what is sent to eSett. But the data is not per an area, it is rather per the DC link. That is then suggested to be used when sent from eSett. But perhaps you have some other suggestions.
- d) To eSett the values are sent as power values, but if this is a flow per 30 minutes or 15 minutes the values (as today with 60 minutes) will not be the same if we use unit MW or the unit MWh. We will check what will be used when we don't have 60 minute-values.

From discussion:

- For intraday it was suggested using **A18** or **A19** (and not **A02**), since the reporting relates to the whole day
- It must be decided if MW or MWh should be used. Jon-Egil suggested using MW.
- For Object Aggregation it is now available a code for “DC Link” = **A09**.

eSett and Svenska kraftnät will continue the discussions.

Appendix A Result from NMEG CIM-XML Subgroup

A.1 CIM based document for Aggregated Metered Production

A.1.1 CIM based document for Aggregated Metered Production contextual model

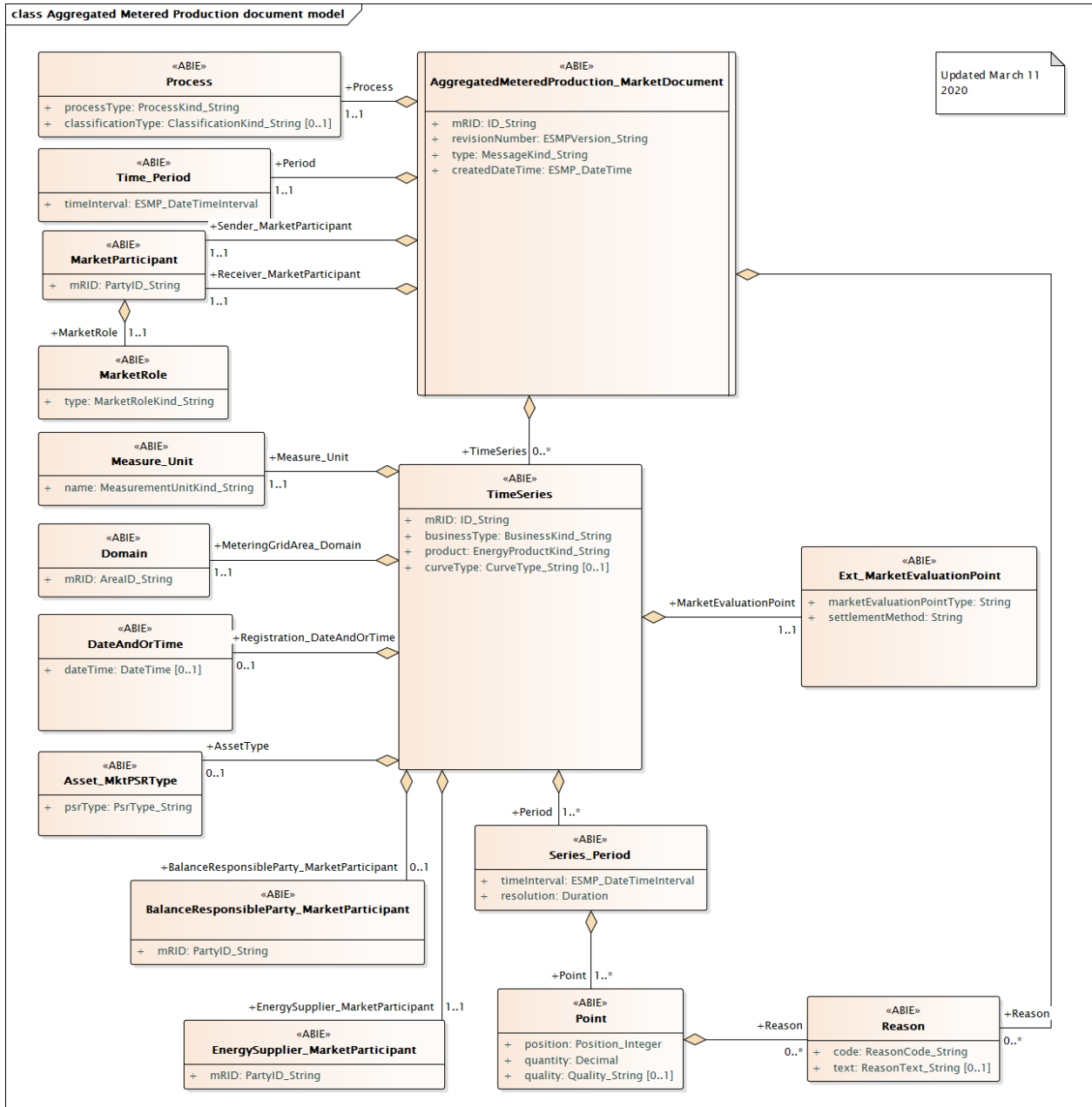


Figure 1: Class diagram: Aggregated Metered Production contextual model

A.1.2 CIM based document for Aggregated Metered Production assembly model

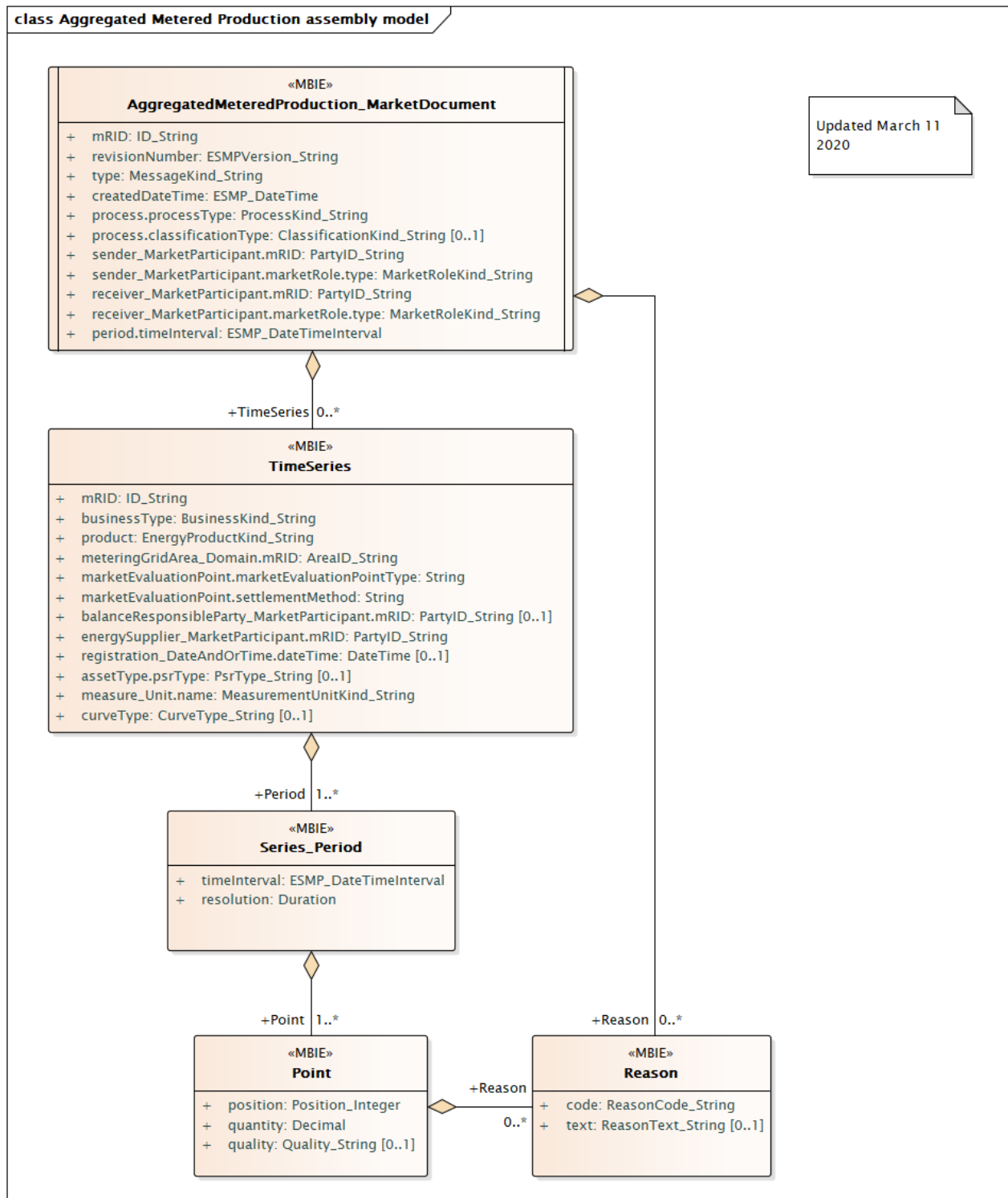


Figure 2: Class diagram: Aggregated Metered Production assembly model

A.1.3 Comments and questions to Aggregated Metered Production

We are missing attributes in CIM for:

- Metering Point Type;
- Settlement Method;
- Production Type.

To be followed up:

- MR from ebIX® to WG16 ebIX® 2019/5 for addition of Settlement Method;
- MR from ebIX® to WG16 ebIX® 2019/3 for addition of Metering point Type;
- The MR NMEG/2020-01 to ebIX® for Regulation Type (Asset type, Technology type or other), Production Category (Production type) and Type of metered data (Business type).
- We will follow up that ebIX® verifies with WG16 if serviceCategory can be used instead of classificationType to differentiate between electricity and gas.
- We will follow up that ebIX® verifies if CEN/EECS Technology and/or Fuel Type codes should be used instead of Asset Type?

Comments:

- The attribute revisionNumber is added to be in line with ENTSO-E – not used in ebIX® documents today;
- The attribute process.processType is used for the ebIX® attribute “Business Reason Code”;
- The attributes sender_MarketParticipant.marketRole.type and receiver_MarketParticipant.marketRole.type is used instead of only one role in the ebIX® documents “Energy Business Process Role”;
- The attribute period.timeInterval is added to be in line with ENTSO-E – not used in ebIX® documents today.

A.2 CIM based document for Validated Data for Settlement for Aggregator

A.2.1 CIM based document for Validated Data for Settlement for Aggregator contextual model

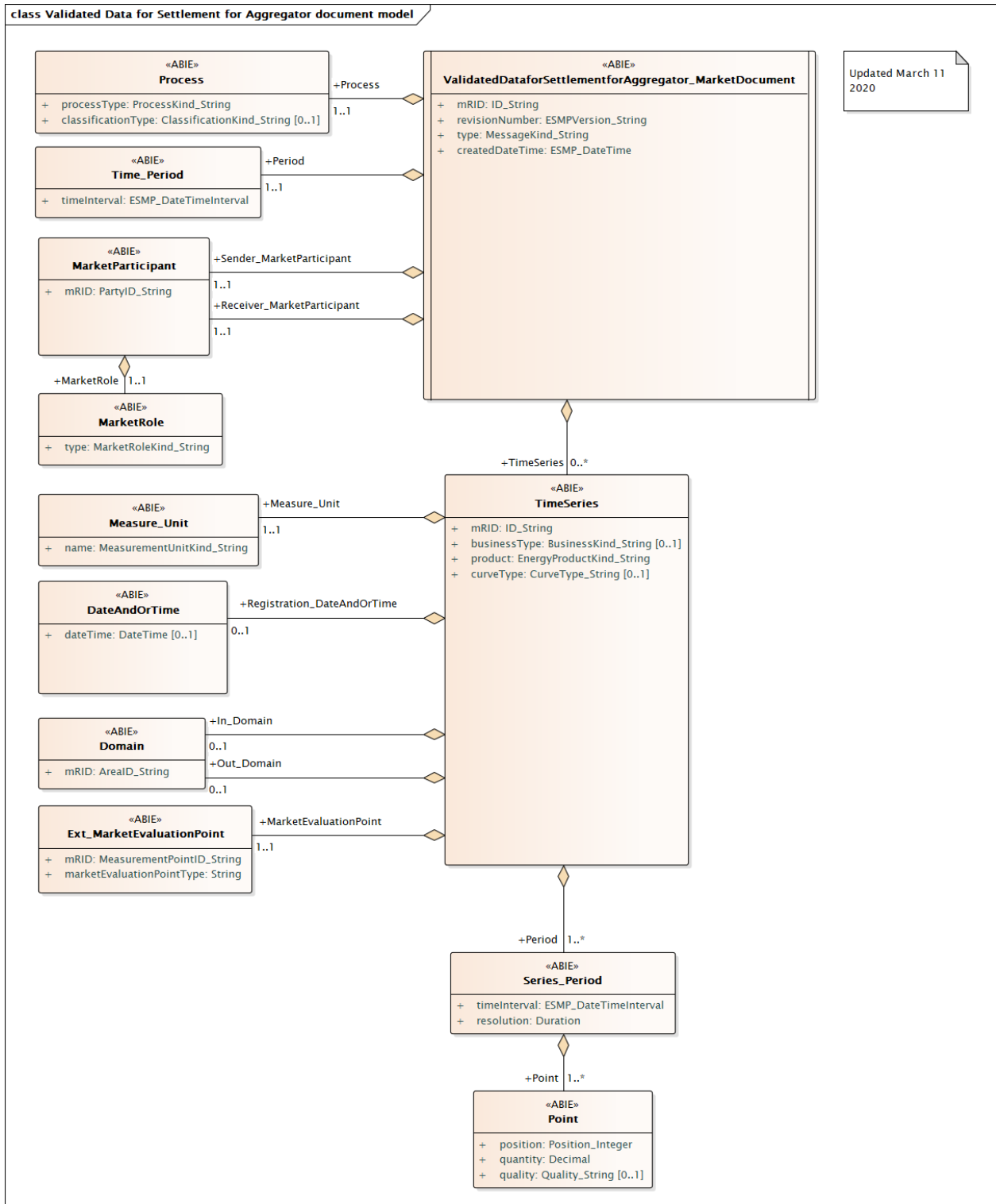


Figure 3: Class diagram: Validated Data for Settlement for Aggregator contextual model

A.2.2 CIM based document for Validated Data for Settlement for Aggregator assembly model

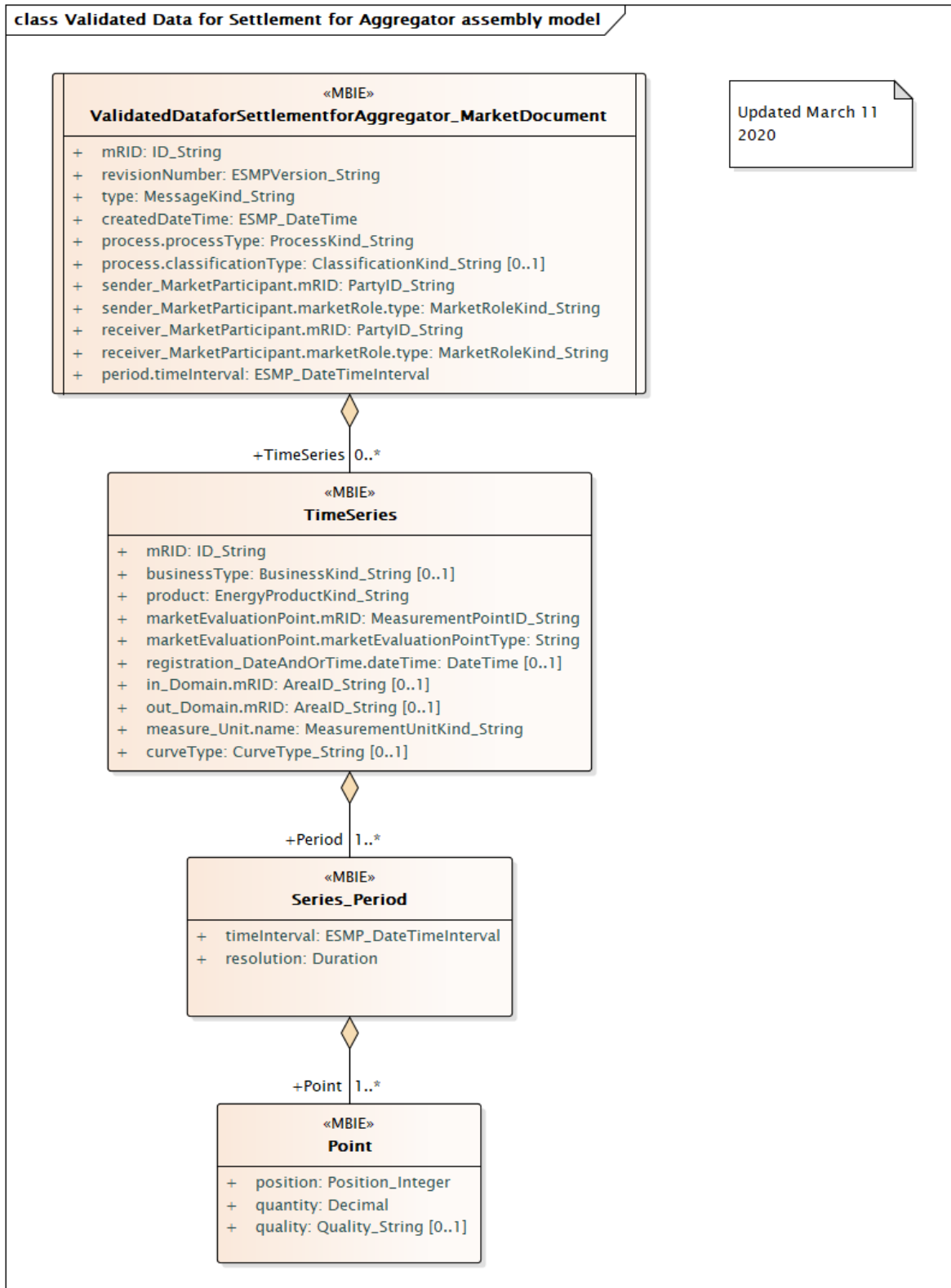


Figure 4: Class diagram: Validated Data for Settlement for Aggregator assembly model

A.2.3 Comments and questions to Validated Data for Settlement for Aggregator

We are missing attributes in CIM for:

- Metering Point Type;

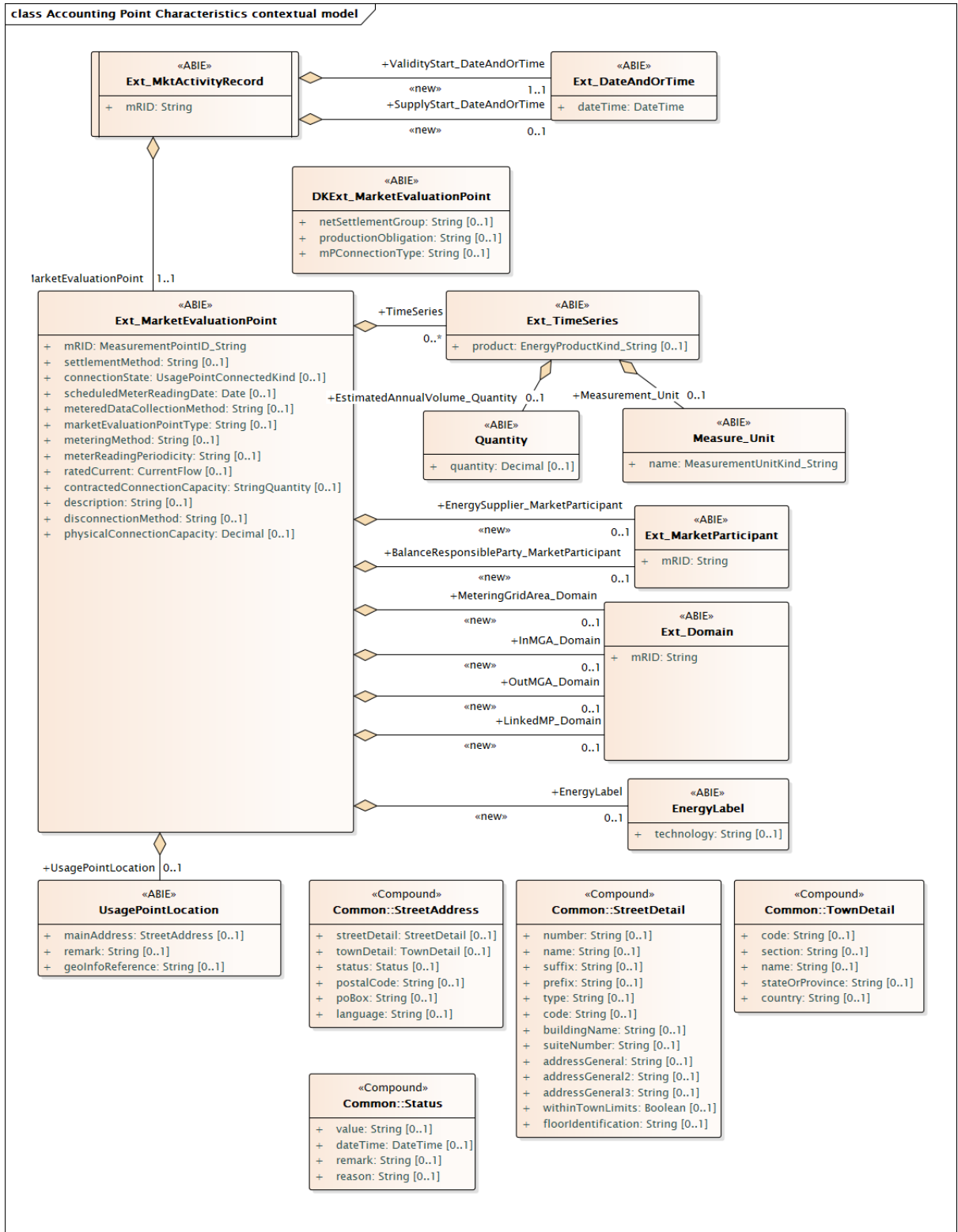
To be followed up:

- MR from ebIX® to WG16 ebIX® 2019/3 for addition of Metering point Type.

Comments:

- The attribute revisionNumber is added to be in line with ENTSO-E – not used in ebIX® documents today;
- The attribute process.processType is used for the ebIX® attribute “Business Reason Code”
- The attribute process.classificationType is intended to be used for the ebIX® attribute “Sector” (Electricity or Gas);
- The attributes sender_MarketParticipant.marketRole.type and receiver_MarketParticipant.marketRole.type is used instead of only one role in the ebIX® documents “Energy Business Process Role”;
- The attribute period.timeInterval is added to be in line with ENTSO-E – not used in ebIX® documents today;
- Business Type is currently optional– not used in ebIX® documents today;
- Quantity is required to be in line with ENTSO-E.

A.3 Accounting Point Characteristics contextual model



To be continued

Appendix B Localising ABIEs (Nordic/national ABIEs)

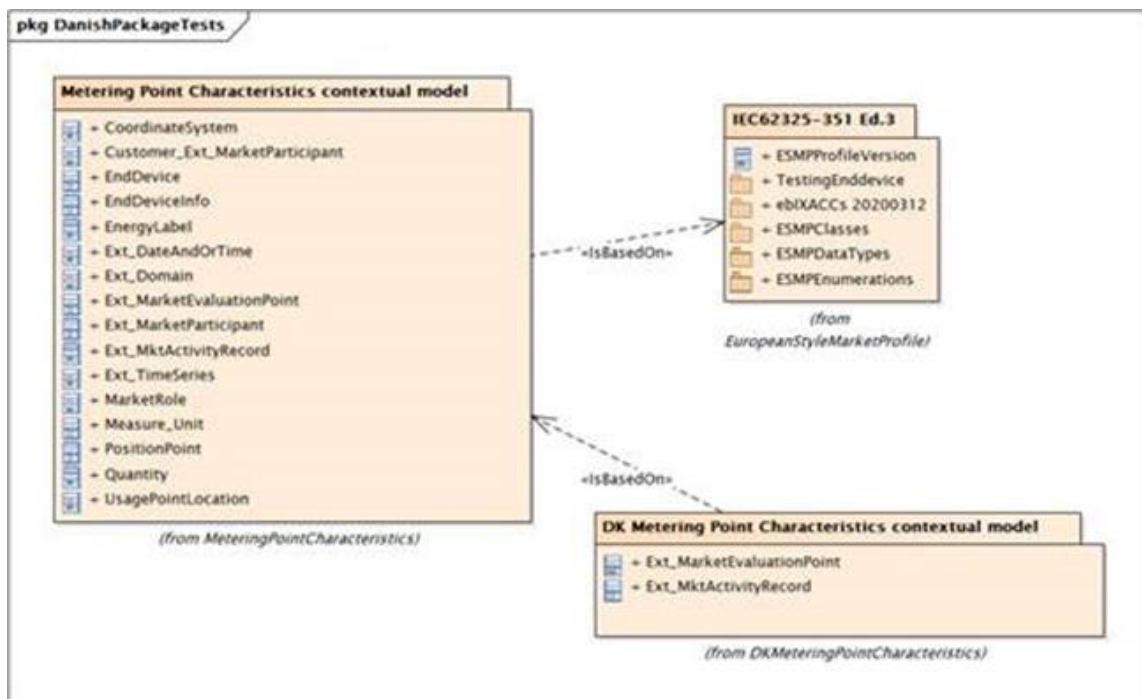
Jan (SE) think he has found a way of localising ABIEs. What I did was the following:

- 1) I created a (test) package to hold the Danish ABIEs
- 2) Within that I created a package for Metering point characteristics (could have called it Accounting point characteristics, but the name is not important)
- 3) Beside that I created a Package diagram, see below. It includes IEC62325-351, the ABIEs for Metering Point Characteristics from ebIX (i.e. the contextual model) and the Danish contextual model for the same characteristics.
- 4) Then I created a package for the contextual model and another for the assembly model within the package in 2)
- 5) In the contextual model I created a class diagram
- 6) I dragged the Ext_MarketEvaluationPoint ABIE from the ebIX package to this diagram. And did no change.
- 7) I dragged the Ext_MarketEvaluationPoint ABIE from the ebIX package to the same diagram. And did the few changes that we made at the meeting (i.e. not using all attributes)
- 8) I added an association between the classes using CIMContextor
- 9) After having used the "Attribute Order", I also made MBIEs using CIMContextor without problems J

So, then it should also be possible, I would say to do:

- a) Nordic extensions to CIM or to the ebIX package when needed
- b) Making a generic Nordic package with ABIEs based on the ebIX ABIEs
- c) Making a Danish package with ABIEs based on b).

I will now verify with Jean-Luc if he thinks this is the way you should/could do it.



Appendix C Overview of Nordic memberships in international standardisation bodies

Name	Member of
Anne Stine	NMEG, ebIX®
Bertil (SE)	EBG
Christian	NMEG, ebIX® observer (?)
Fedder	NMEG, CIM EG, IEC/WG16, CSSG, EEAT, ENTSO-E CIM tools, CIO/LIO
Jan (SE)	NMEG, HG, ebIX®, IEC/WG16+14
Jari	NMEG, CIM EG
Jon-Egil	NMEG, CIM EG, IEC/WG16, ESMP, CCC, CIO/LIO, TPC
Martin (SE)	CCC
Oscar	CIO/LIO, ebIX®, CIM EG
Ove	NMEG, HG, ebIX®, IEC/WG16
Svein (NO)	IEC/WG14+13, CGMES
Teemu	NMEG, CIM EG, EBG, ETC, CIO/LIO

Abbreviations:

CCC	Coordinated Capacity Calculation (project under CIM EG)
CGMES	Common Grid Model Exchange Standard (subgroup under CIM EG)
CIO/LIO	Central Issuing Office / Local Issuing Office
CSSG	Communication Standards (subgroup under CIM EG)
Dc	ENTSO-E Digital committee
EBG	ebIX® Business Group
EEAT	ENTSO-E Enterprise Architecture Team (subgroup under Dc)
ESMP	European Style Market Profile (subgroup under CIM EG)
ETC	ebIX® Technical Committee
HG	ebIX®, EFET and ENTSO-E Harmonisation Group
MC	ENTSO-E Market Committee
MIT	Market Integration and Transparency (subgroup under MC)
TPC	Transparency Platform Coordinators (subgroup under MIT)

Appendix D Overview of the usage of xml-schemas in the Nordic countries

#	XML schema	BRS	Version used by					
			NBS	NMA	Energinet	Fingrid	Statnett	Svk
1.	NEG ECAN publication document	NBS BRS for TSO/MO	1.0					
2.	NEG ERRP Reserve Allocation Result Document	a) NBS BRS for TSO/MO b) BRS for Trade	1.0					
3.	NEG Area Specification Document	a) NBS BRS for Master Data b) BRS for Trade	1.0 ¹	2.0 (CIM)				
4.	NEG Bilateral Trade Structure Document	NBS BRS for Master Data	1.0					
5.	NEG Party Master Data Document	NBS BRS for Master Data	1.0					
6.	NEG Resource Object Master Data Document	NBS BRS for Master Data	1.1					
7.	ENTSO-E Acknowledgement Document	NEG Common XML rules and ...	6.0					
8.	ENTSO-E ERRP Planned Resource Schedule Document	NBS BRS for TSO/MO	5.0					
9.	NEG ERRP Planned Resource Schedule Document	BRS for Schedules						
10.	ENTSO-E ERRP Resource Schedule Confirmation Report	BRS for Schedules	No NEG version					
11.	ENTSO-E ESS Anomaly Report	BRS for Schedules	No NEG version					
12.	ENTSO-E Outage document	BRS for Schedules	No NEG version					
13.	NEG ESP Energy Account Report Document	NBS BRS	1.0					
14.	ENTSO-E ESS Confirmation Report	NBS BRS	4.1					
15.	ENTSO-E ESS Schedule Document	a) NBS BRS b) NBS BRS for TSO/MO	4.1					
16.	ebIX® Aggregated Data per MGA for Settlement for Settlement Responsible	NBS BRS	2013pA					
17.	ebIX® Aggregated Data per Neighbouring Grid for Settlement for Settlement Responsible	NBS BRS	2013pA					
18.	ebIX® NEG Confirmation of Aggregated Data per Neighbouring Grid for ISR	NBS BRS	2013pA					
19.	ebIX® Validated Data for Settlement for Aggregator	NBS BRS	2013pA					
20.	NEG ECAN Allocation Result Document	BRS for Trade						
21.	NEG Currency Exchange Rate Document	BRS for Trade						
22.	NEG Auction Specification	BRS for Trade						
23.	NEG Spot Market Bid Document	BRS for Trade						
24.	ENTSO-E ERRP Reserve Bid Document	BRS for Trade						
25.	ENTSO-E ERRP Activation Document	BRS for Operate						

¹ The NBS version 1.0 is using dateTimeType for Validity Start/End (error correction), while the MO version 1.0 is using dateType. dateTimeType will be used from version 2.0.